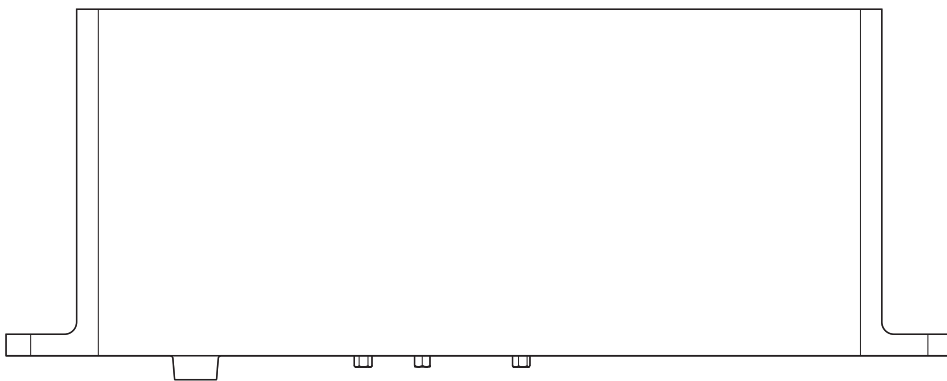


# System M+

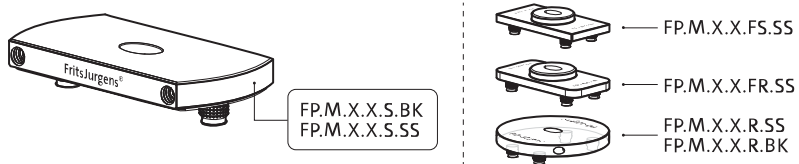
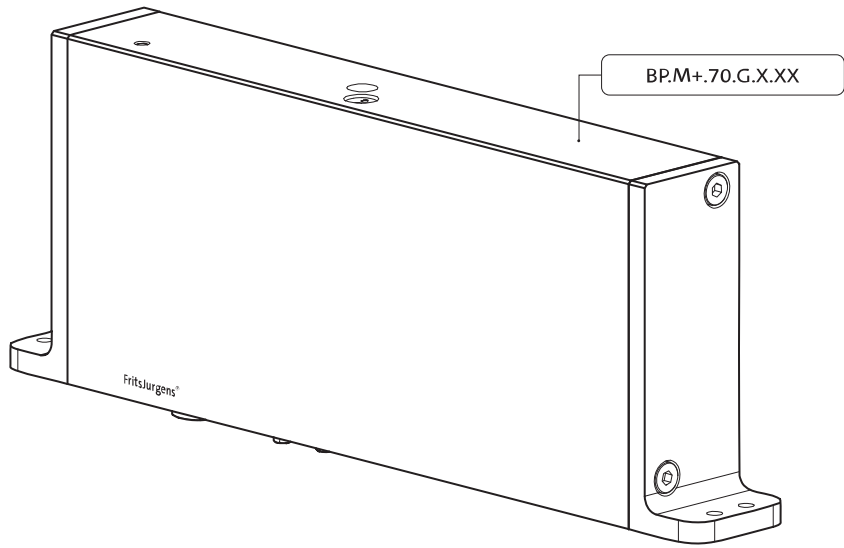
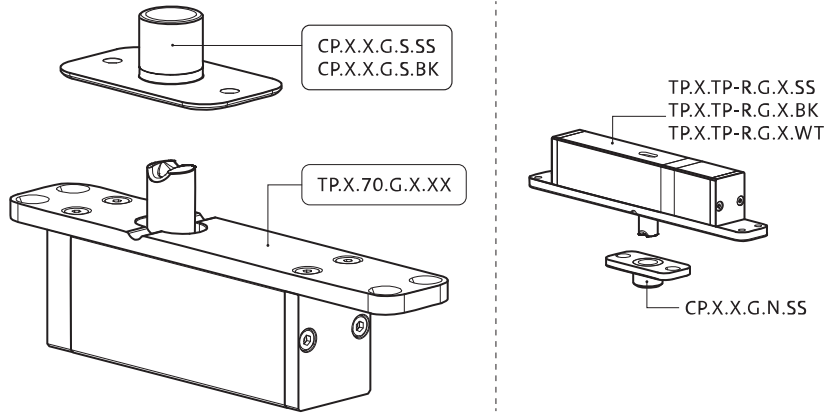
## Fräs- und Montageanleitung

FritsJurgens Set - 70 mm Klasse G - Unsichtbar



FritsJurgens®

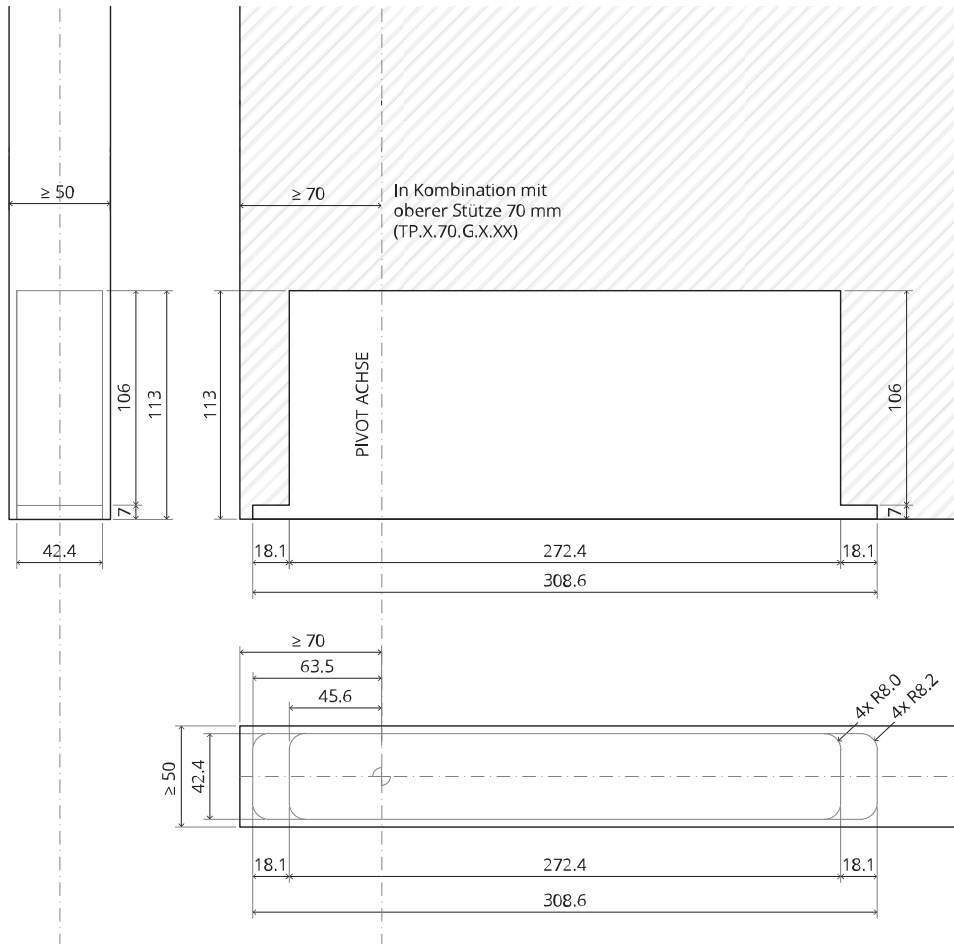


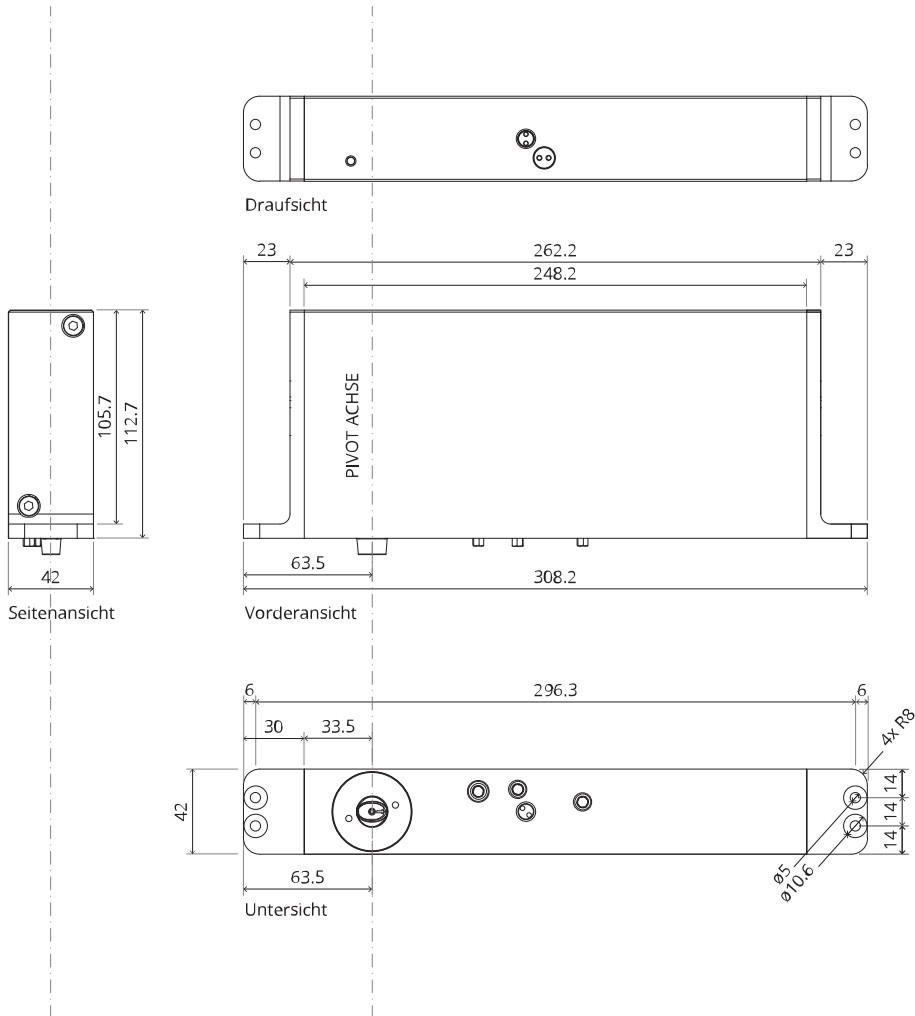




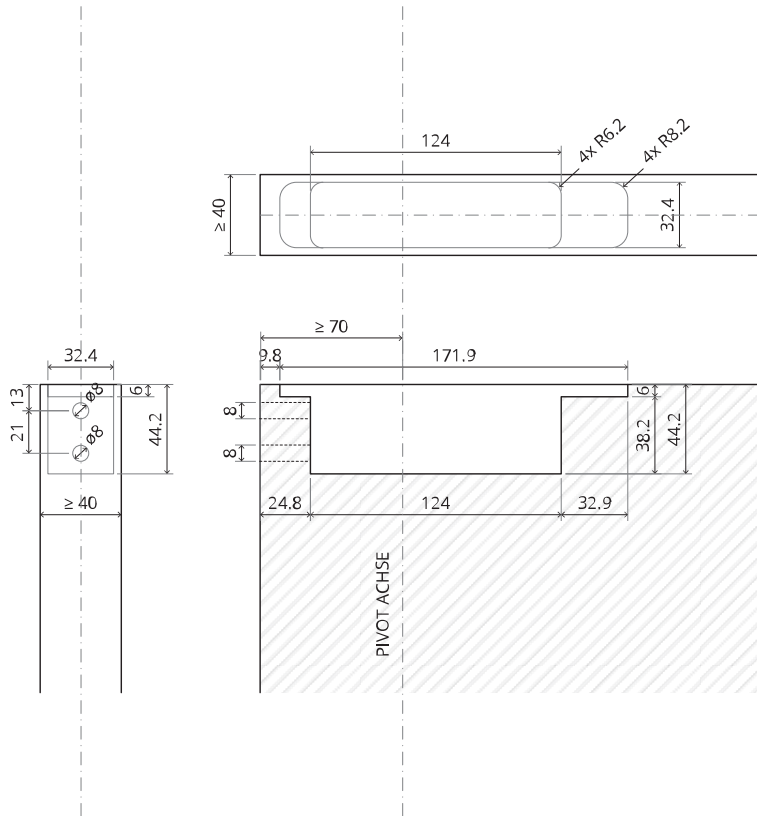
# Fräsanleitung

# BP.M+.70.G.X.XX

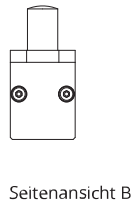
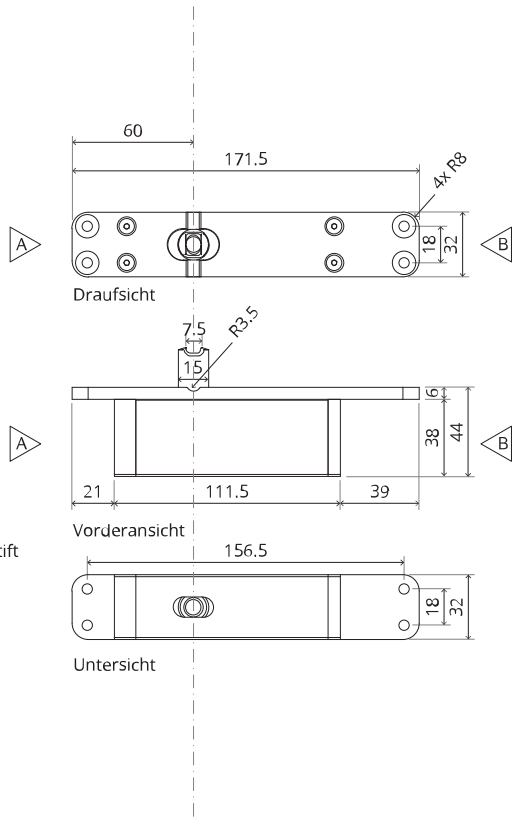
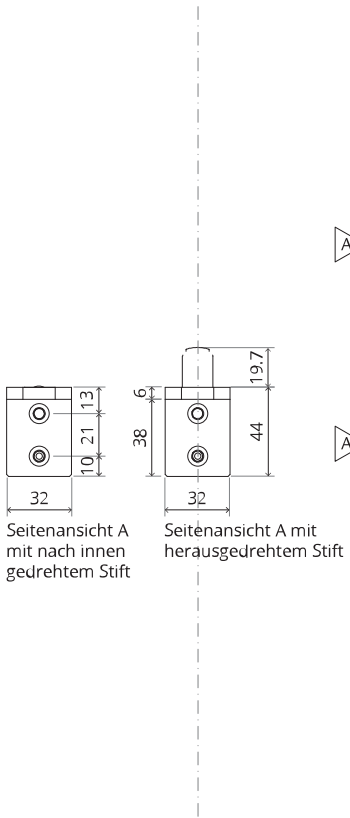




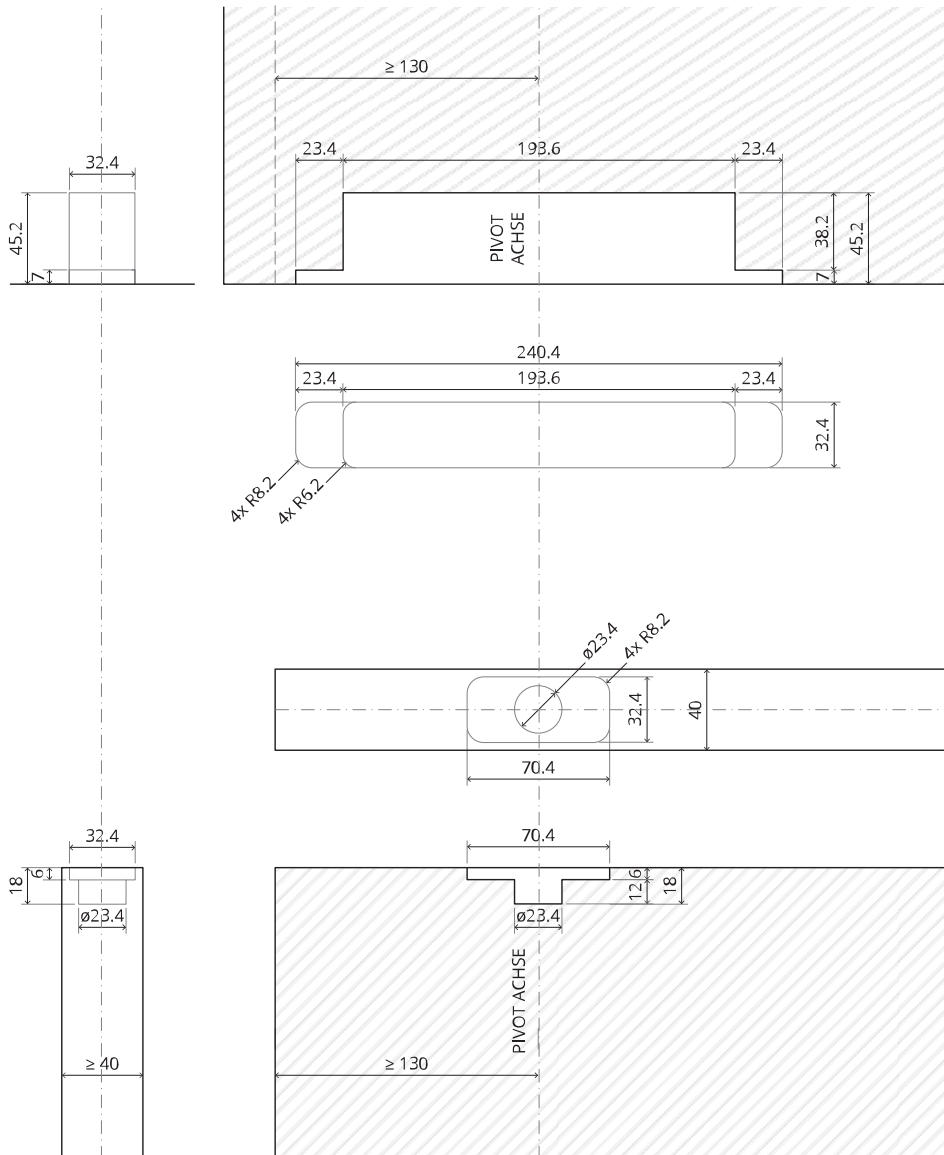
# TP.X.70.G.X.XX

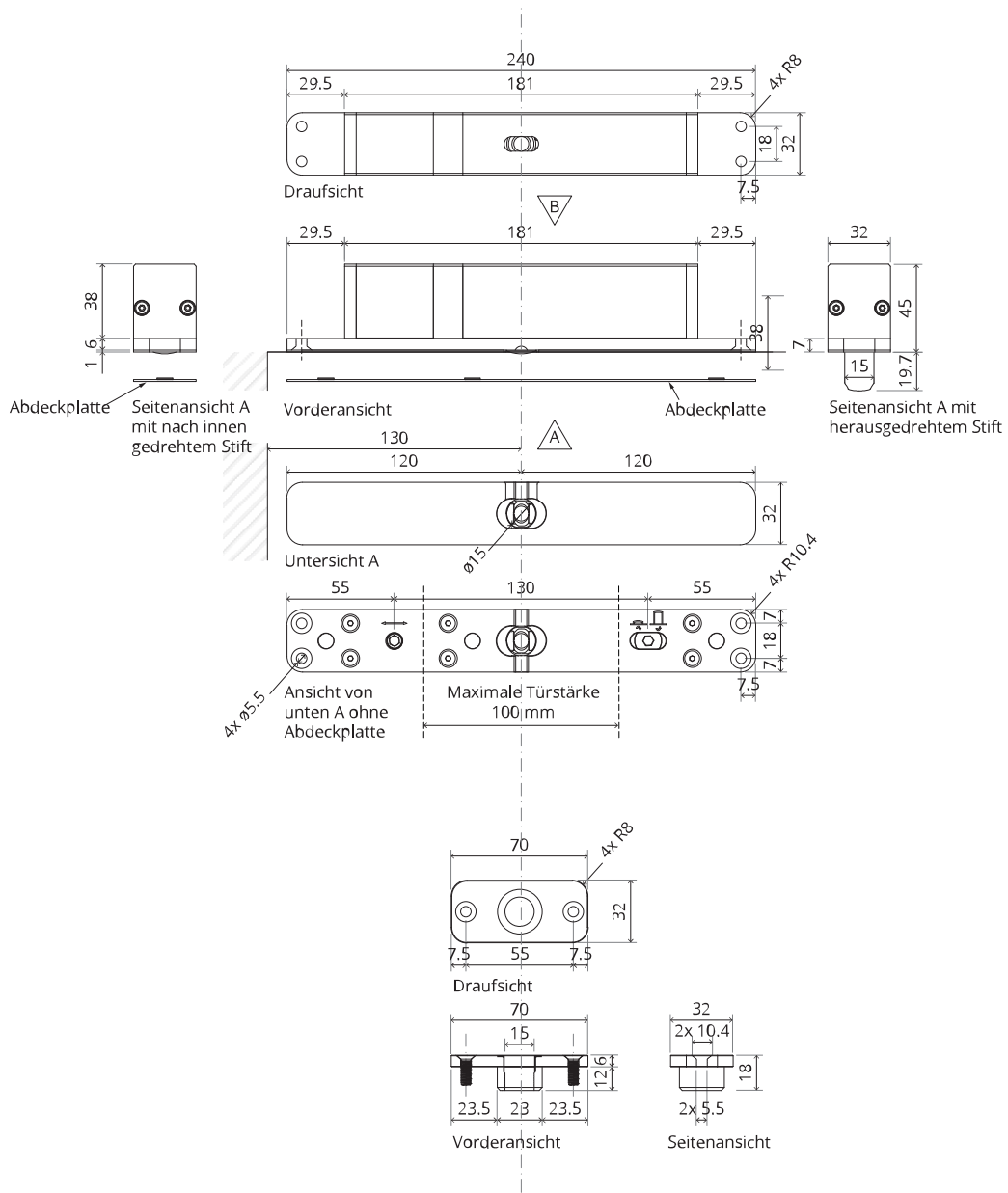


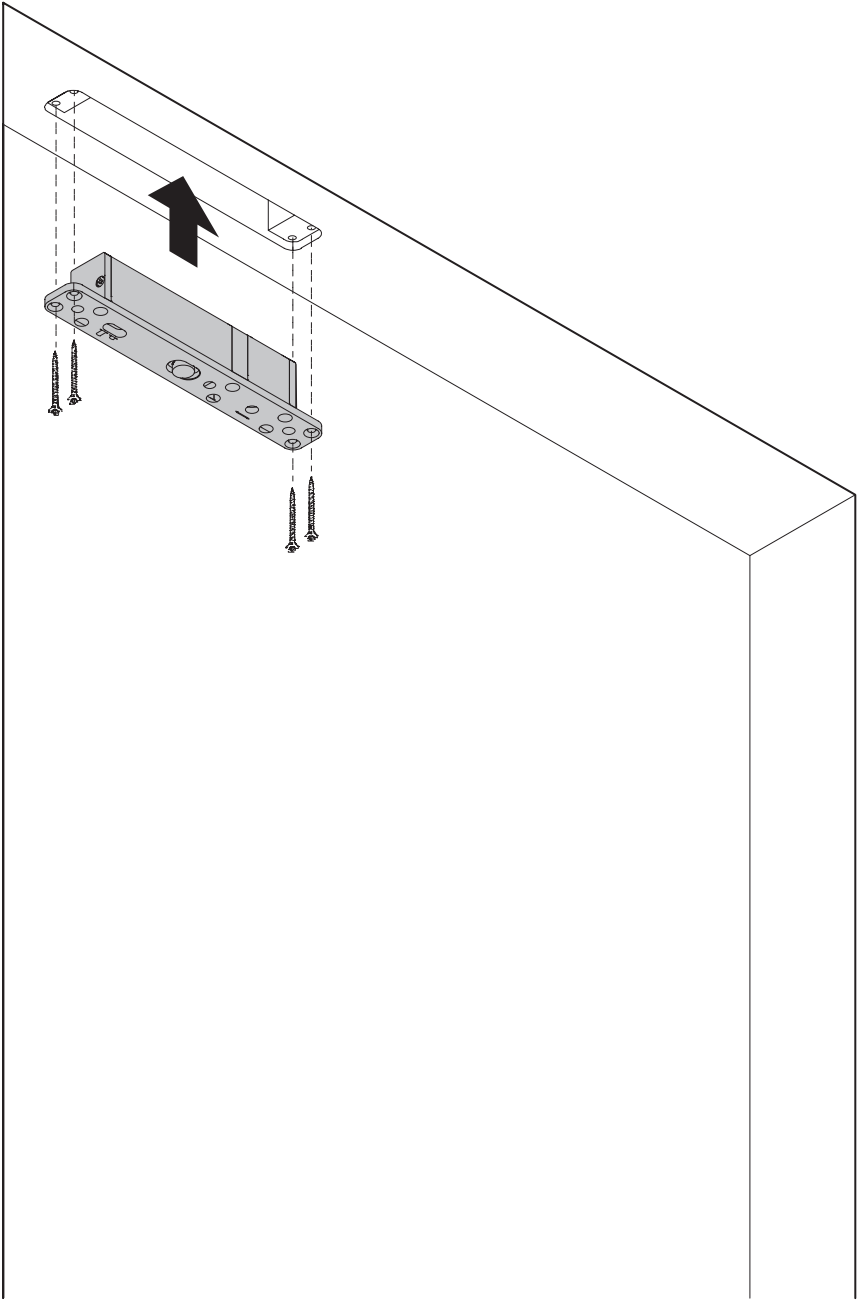


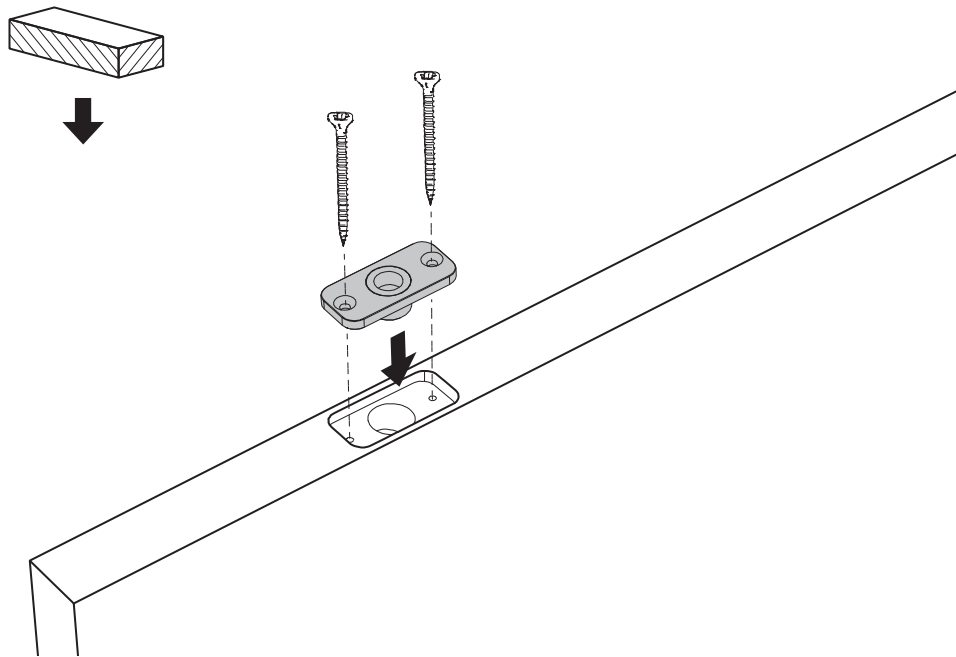
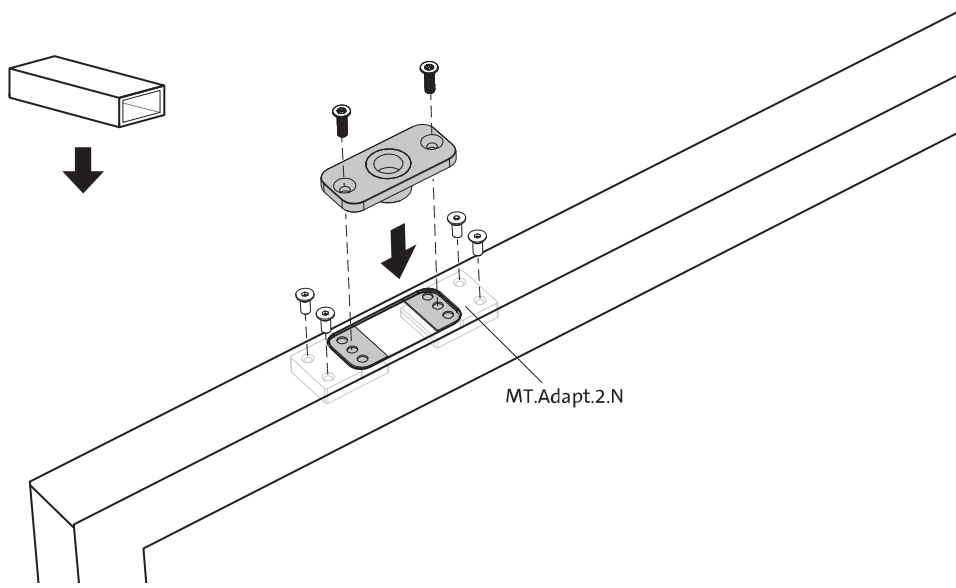


# TP.X.TP-R.G.X. \_\_

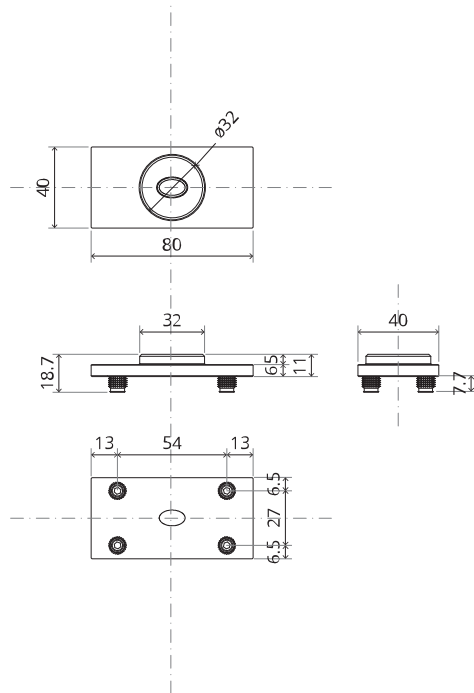
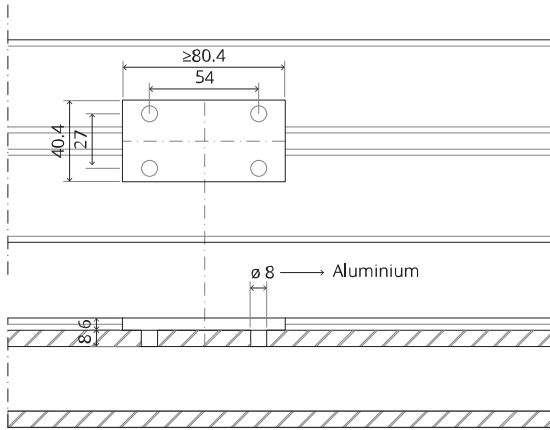


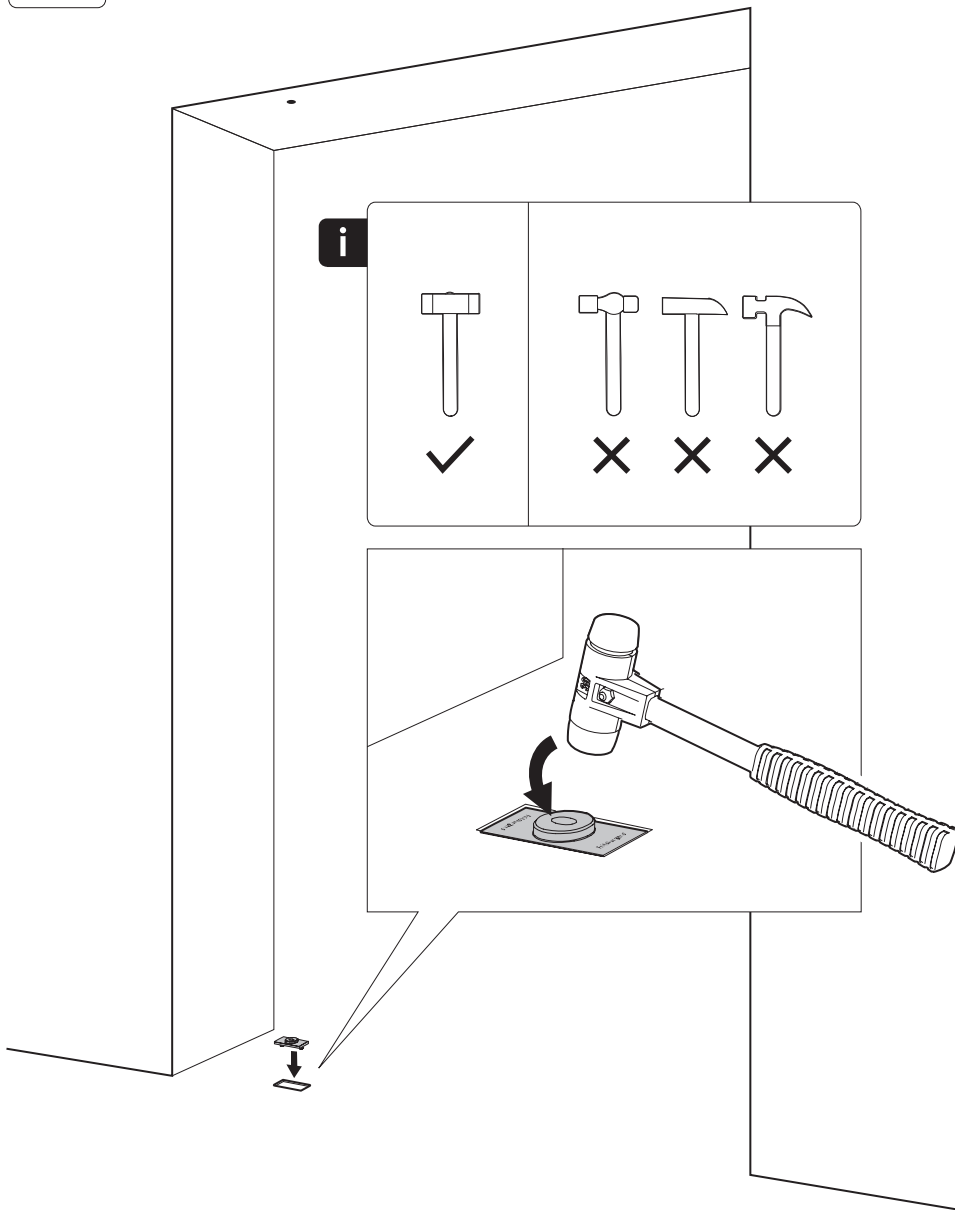




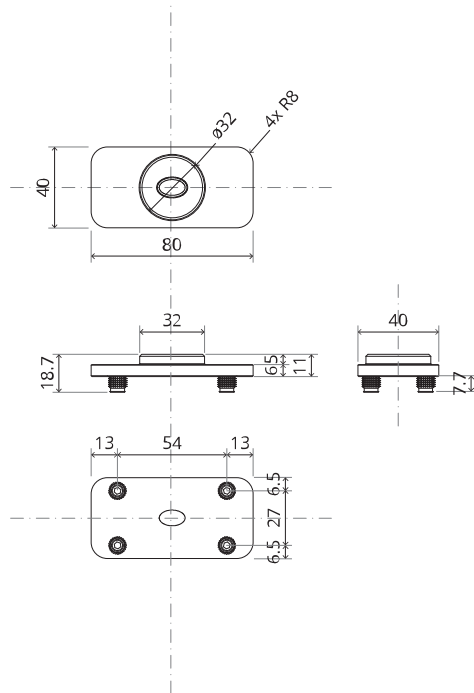
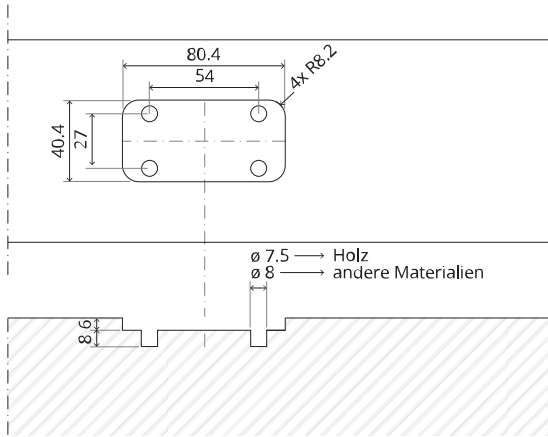


# FP.M.X.X.FS.SS

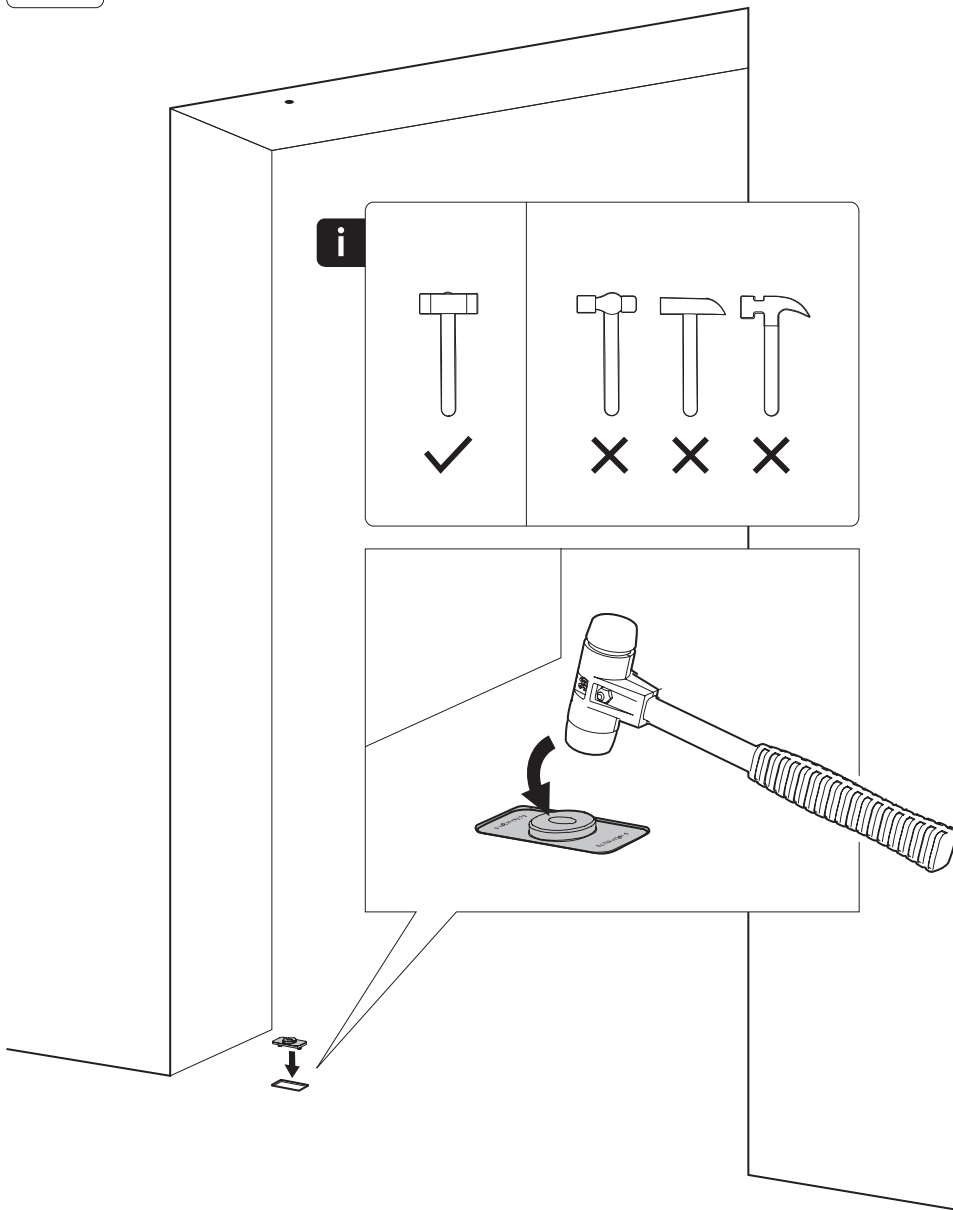




# FP.M.X.X.FR.SS

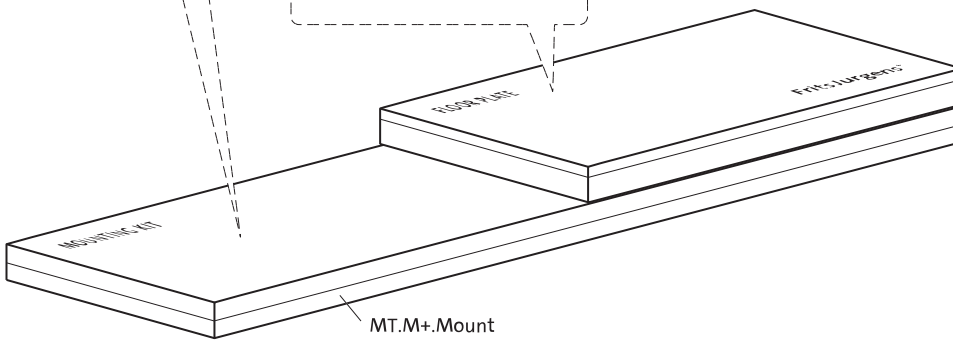
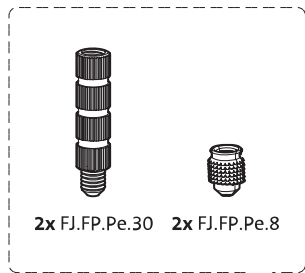
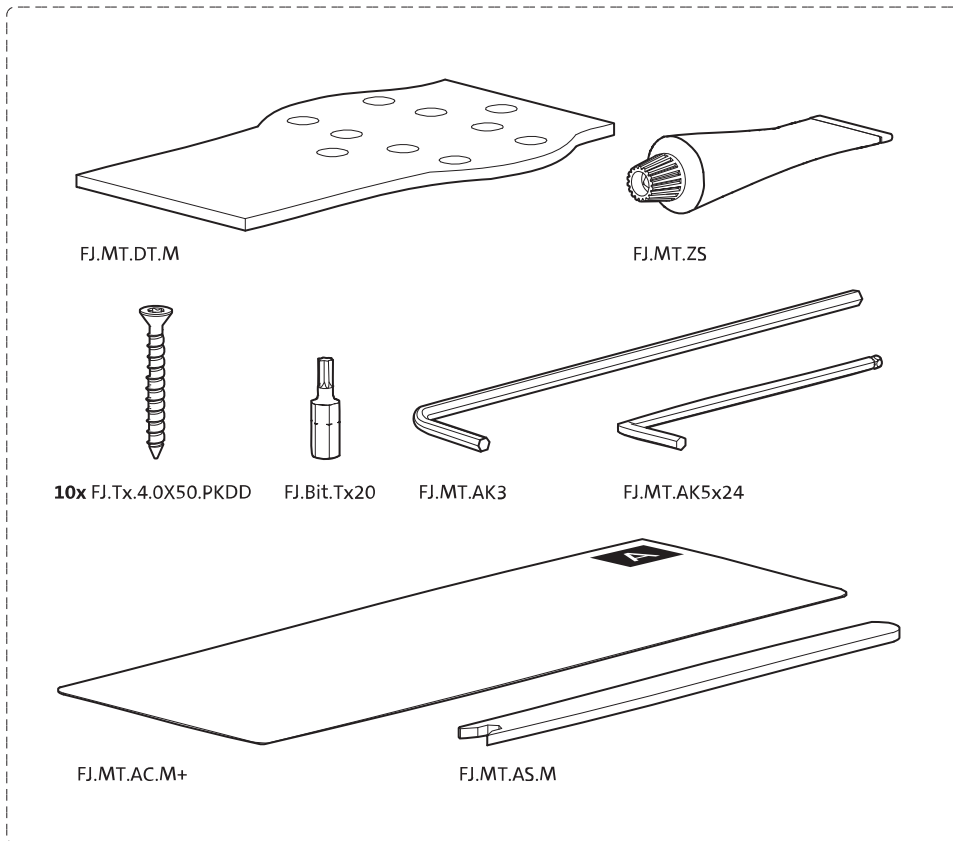


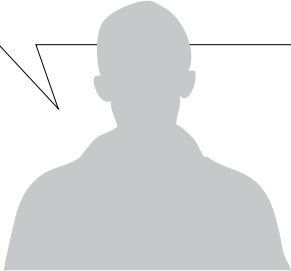
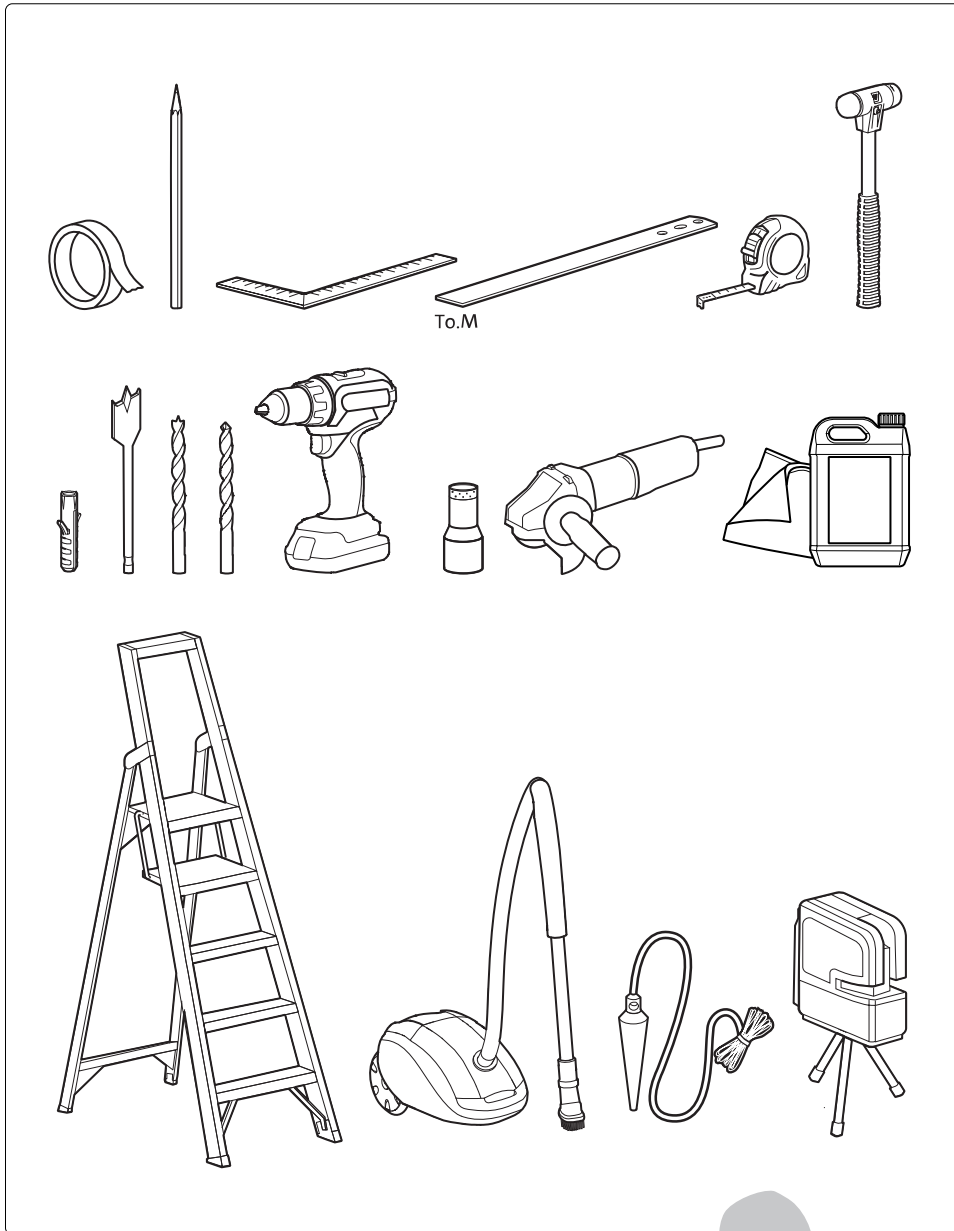


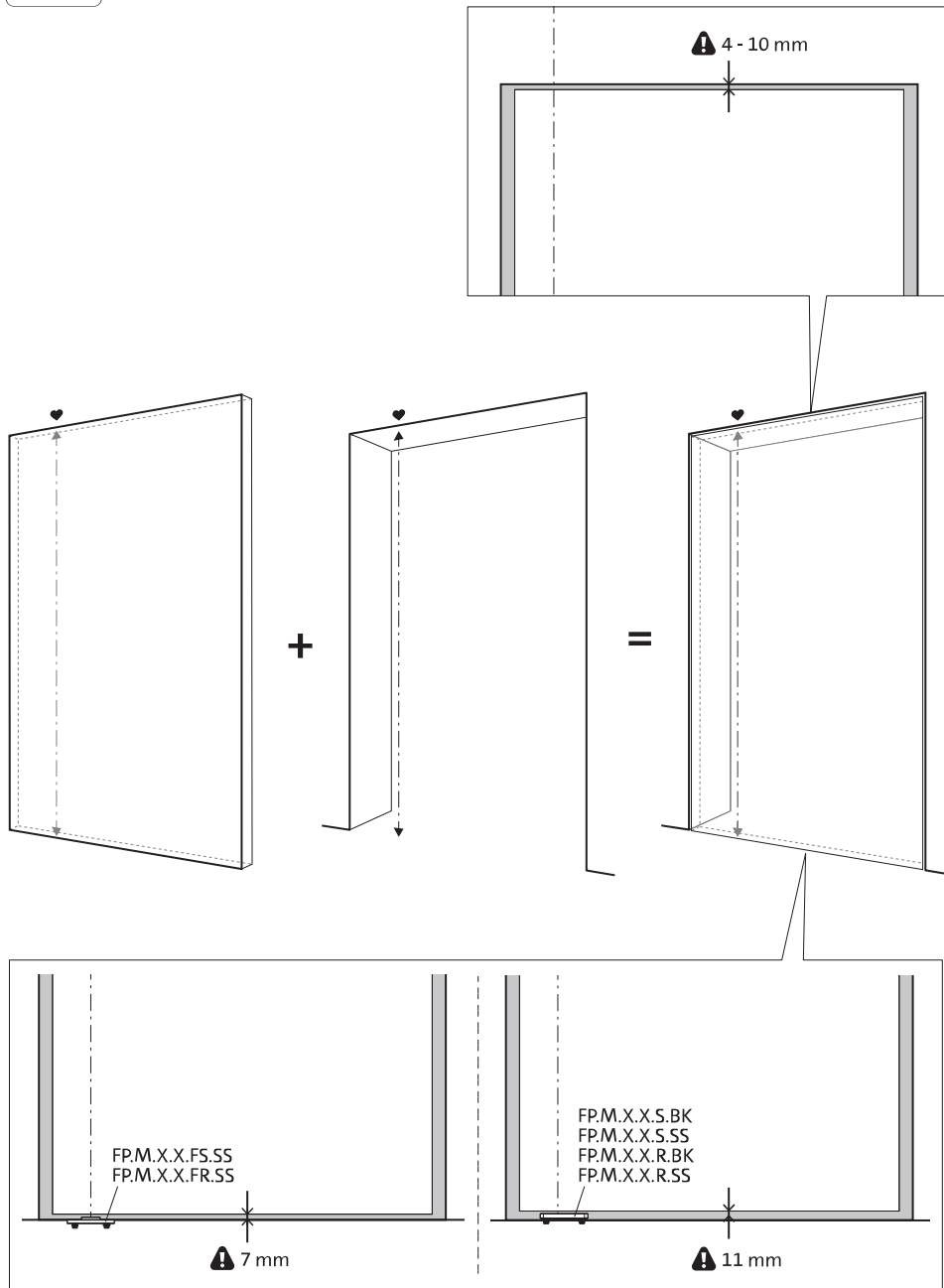


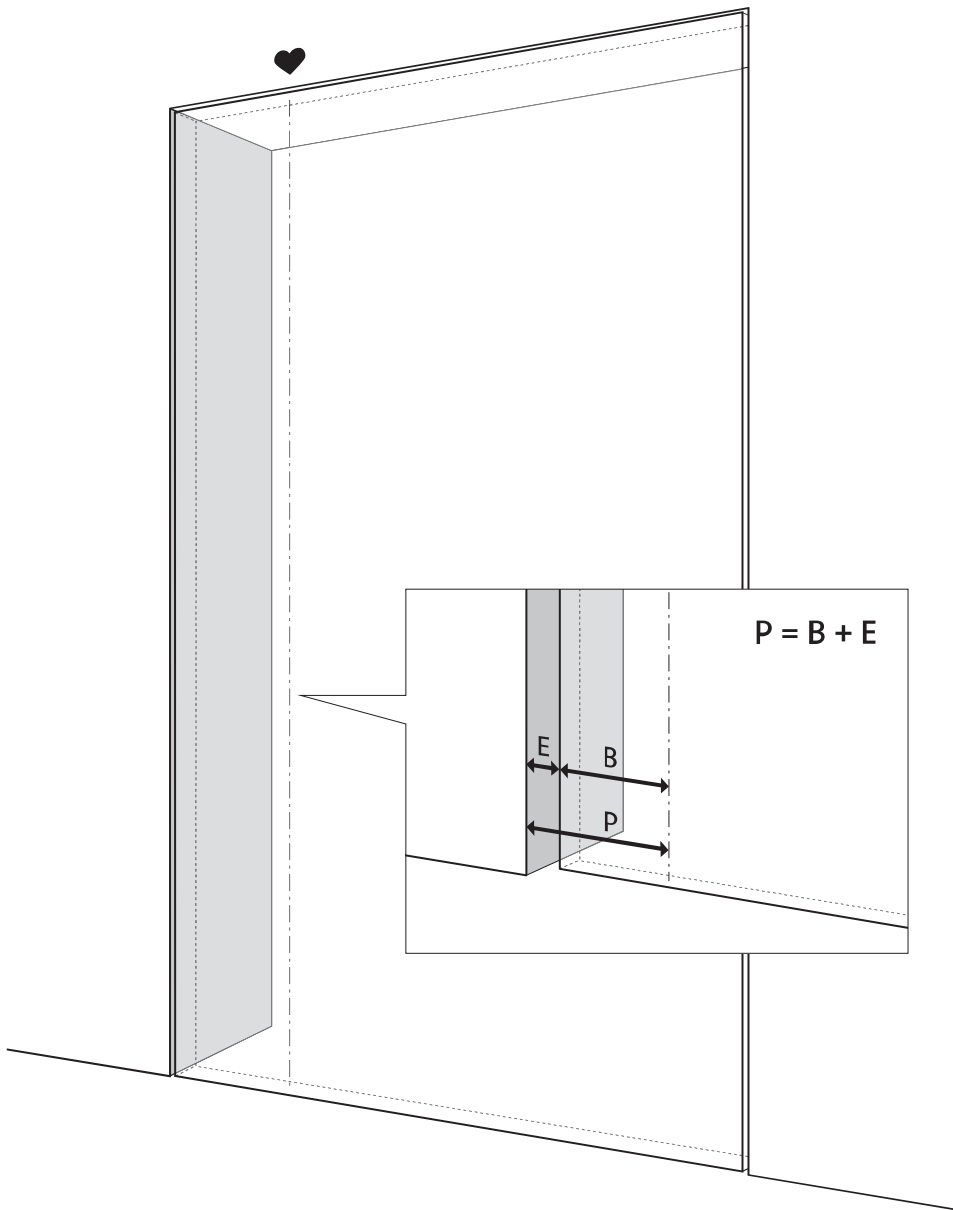


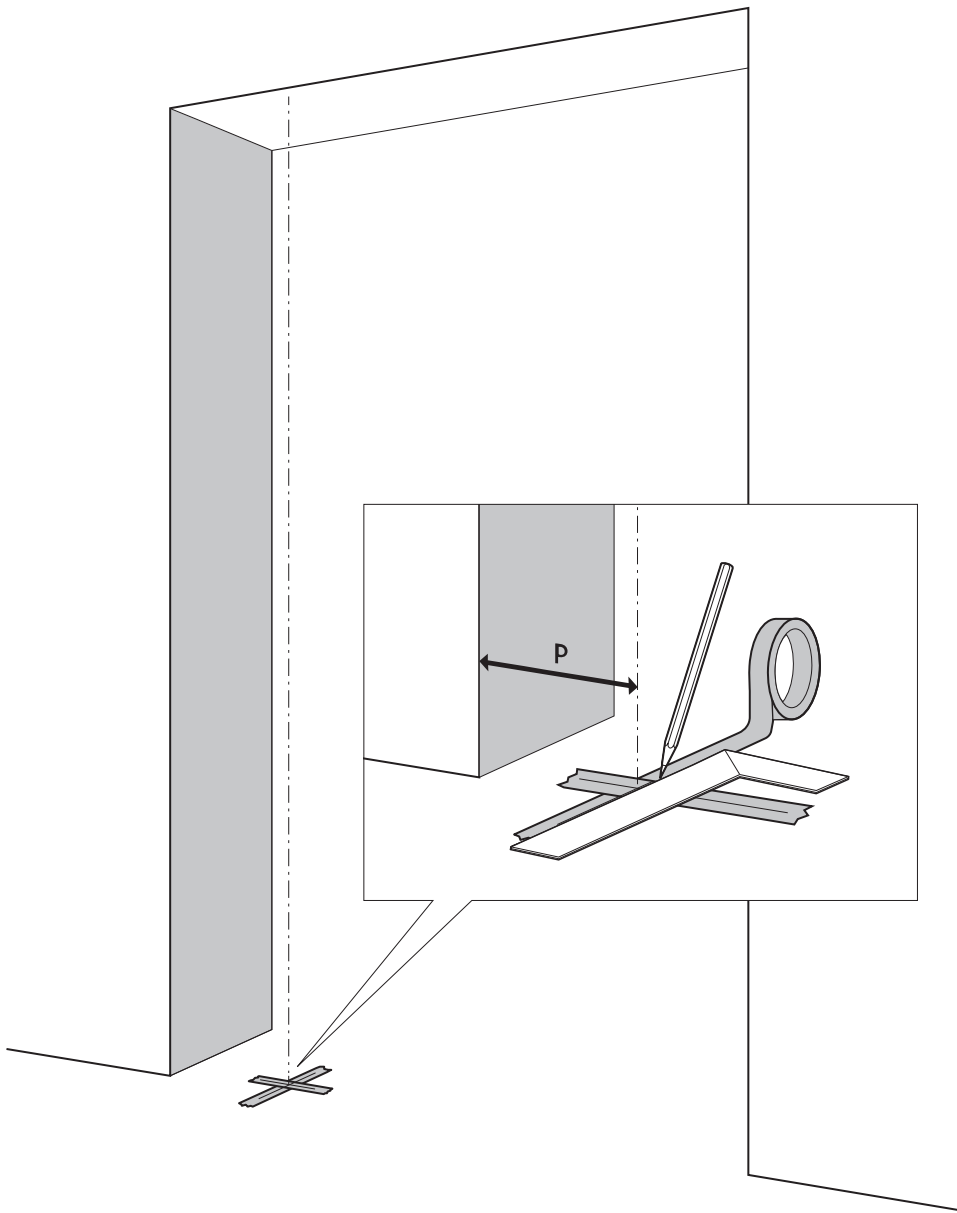
# Montageanleitung



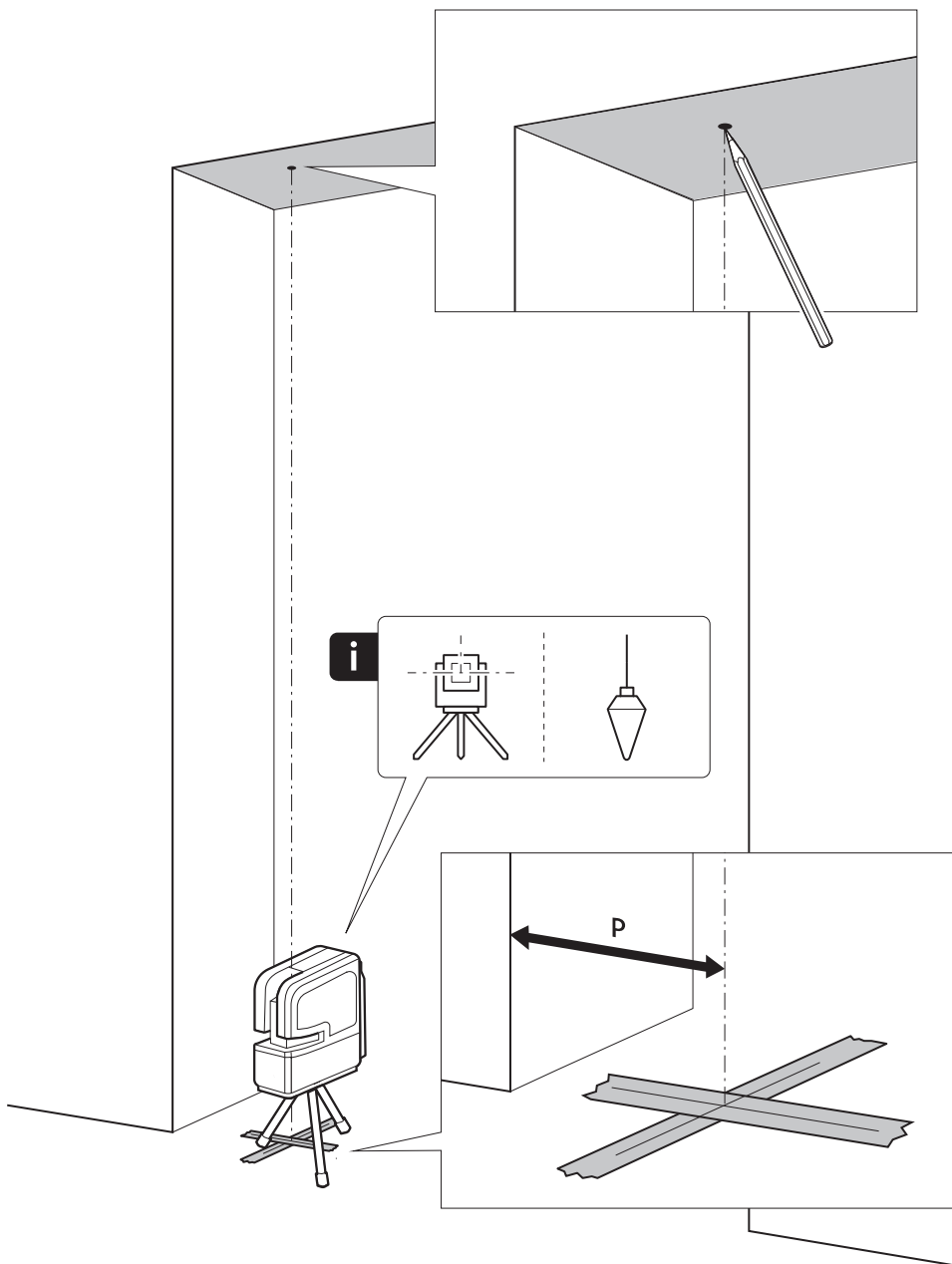
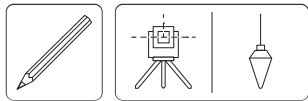


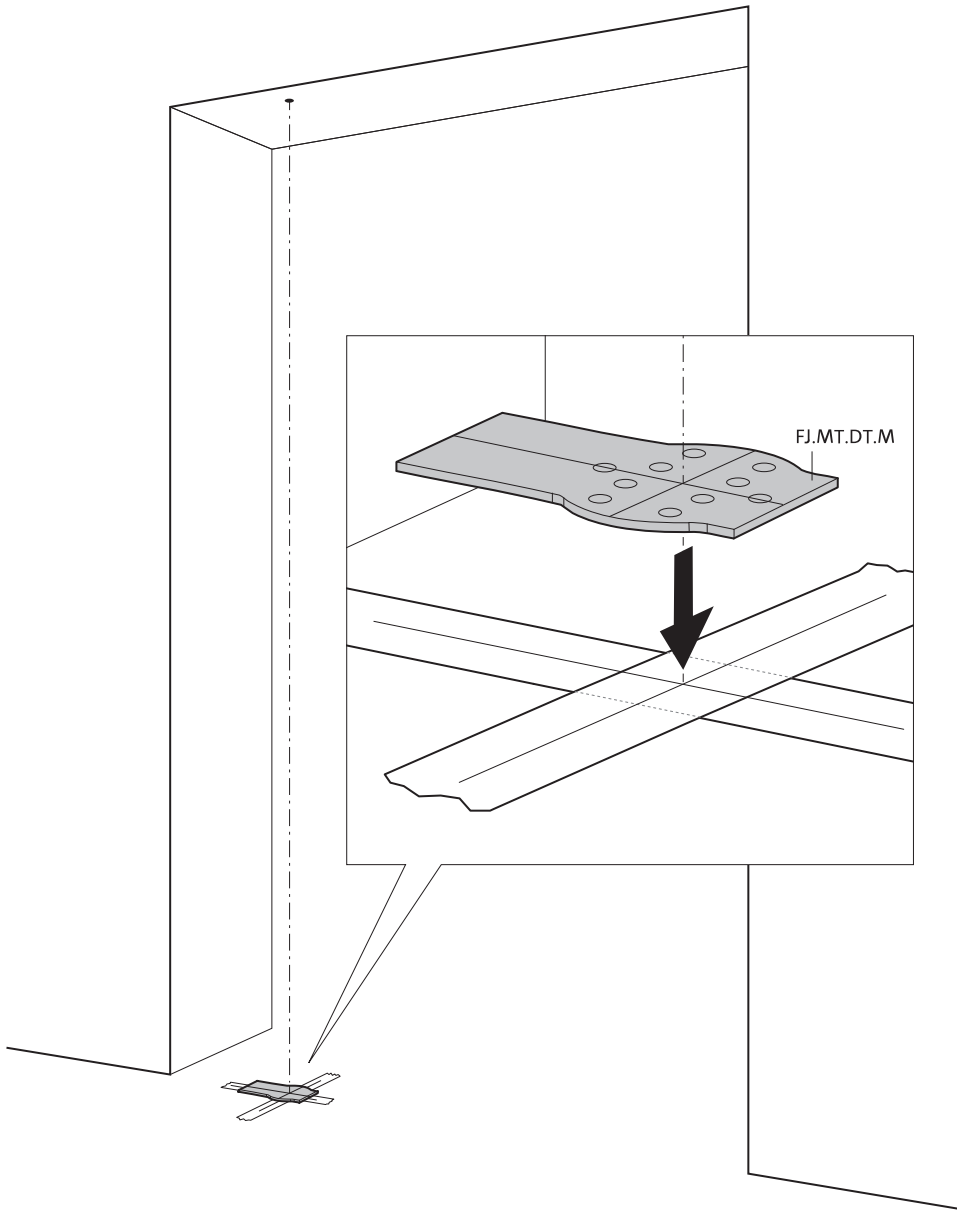


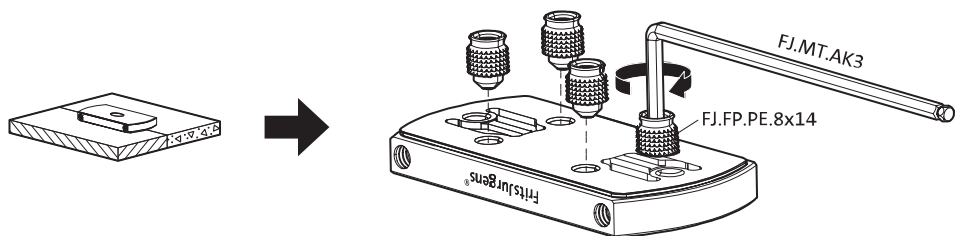
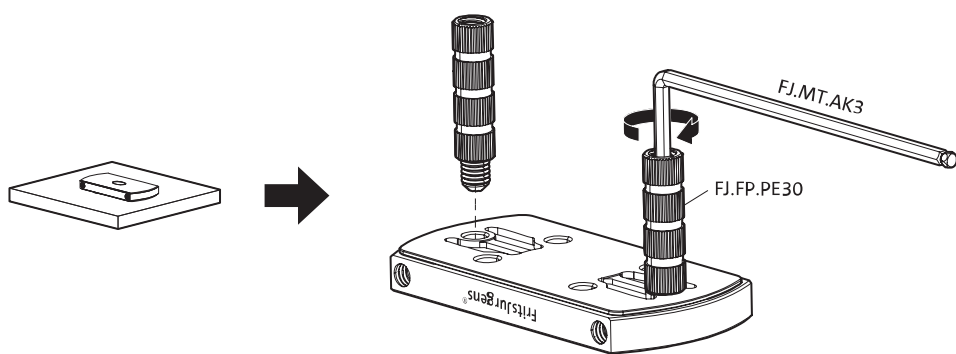
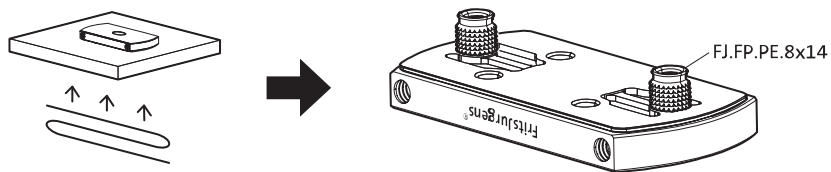






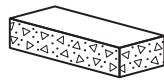




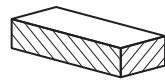




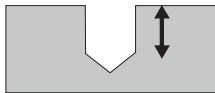
ø8 mm (5/16")



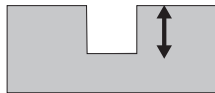
ø8 mm (5/16")



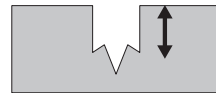
ø7.5 mm (19/64")



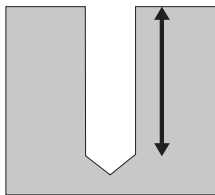
8 mm (5/16")



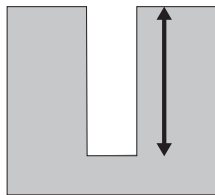
8 mm (5/16")



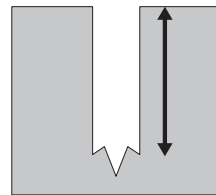
8 mm (5/16")



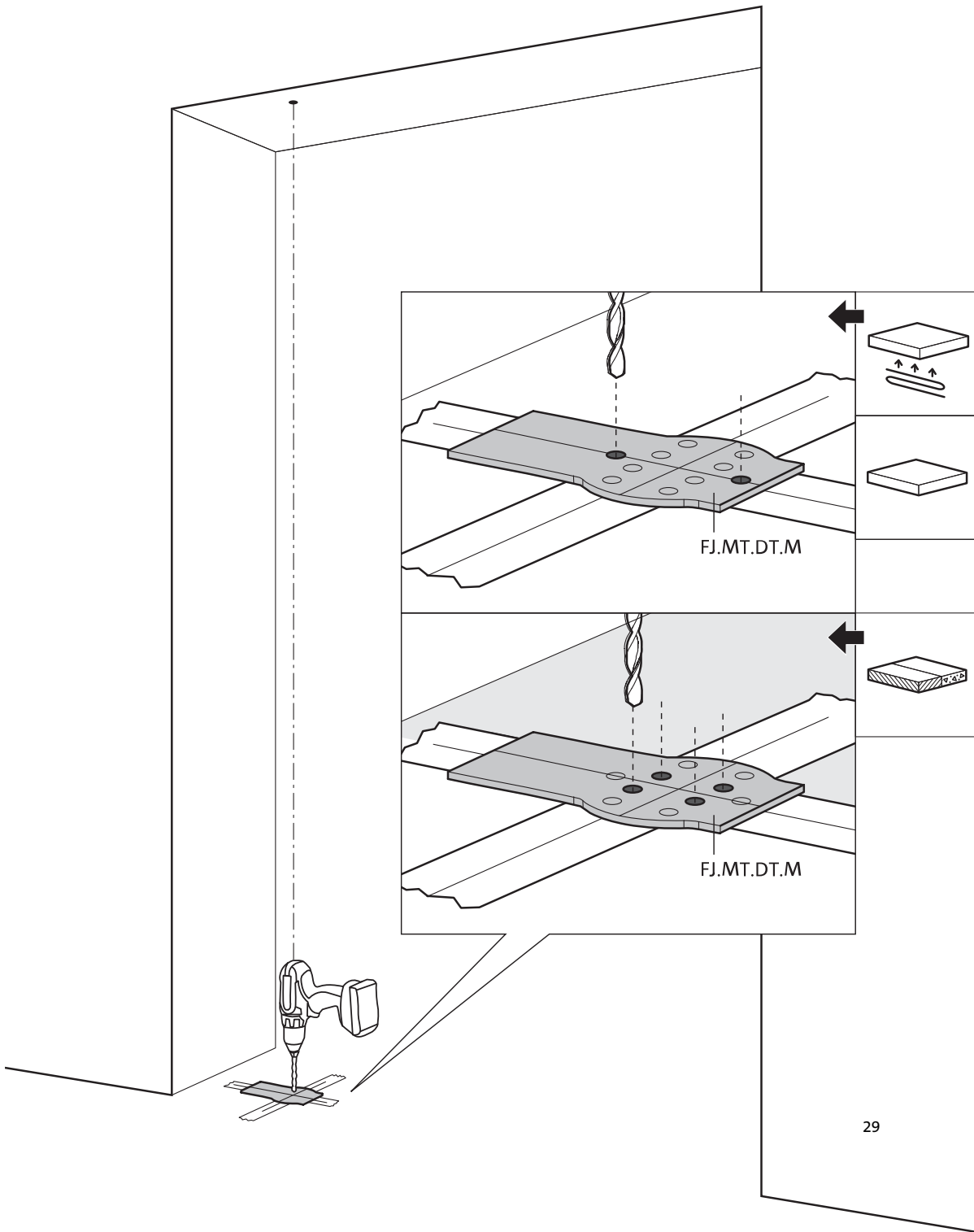
30 mm (13/16")

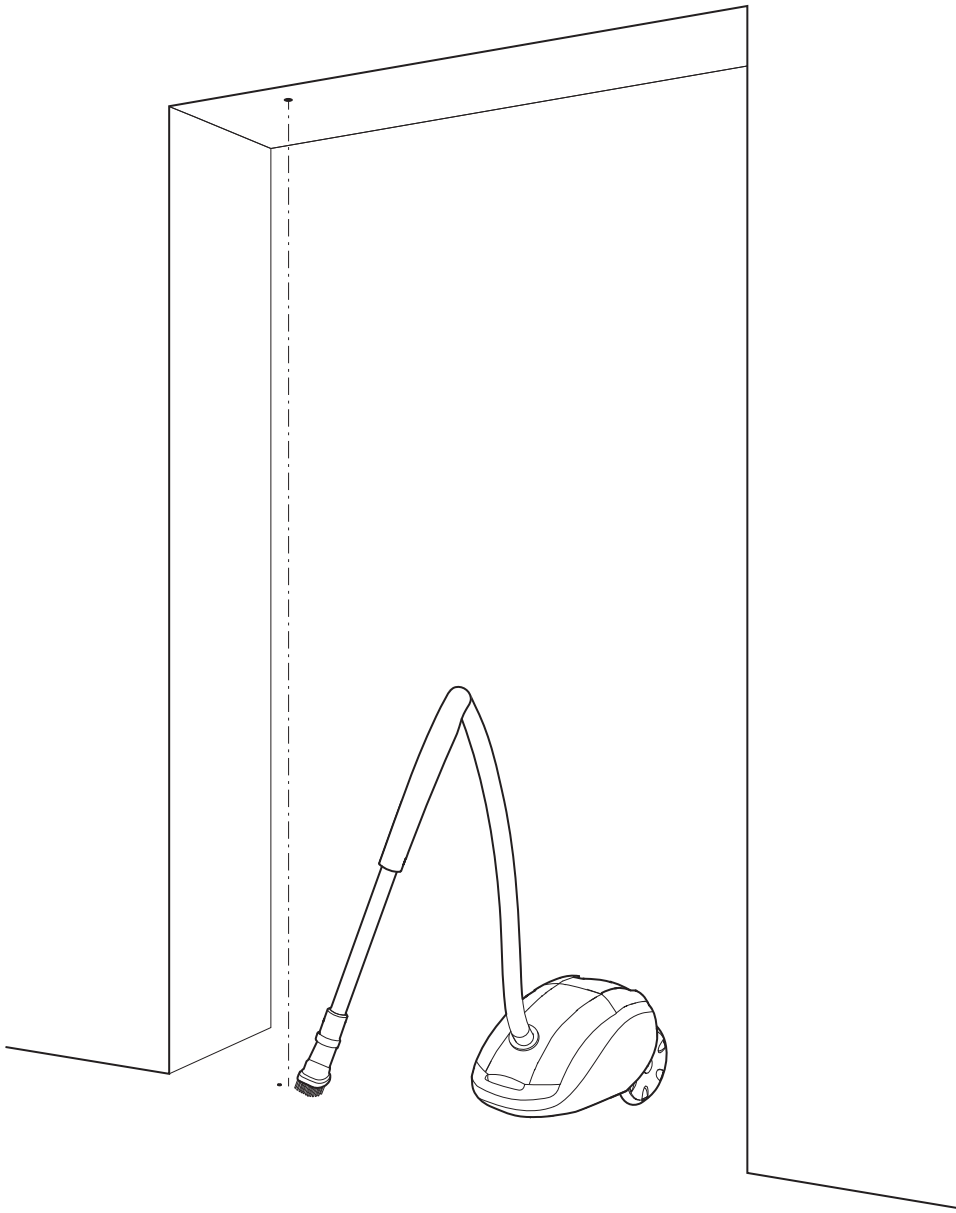


30 mm (13/16")



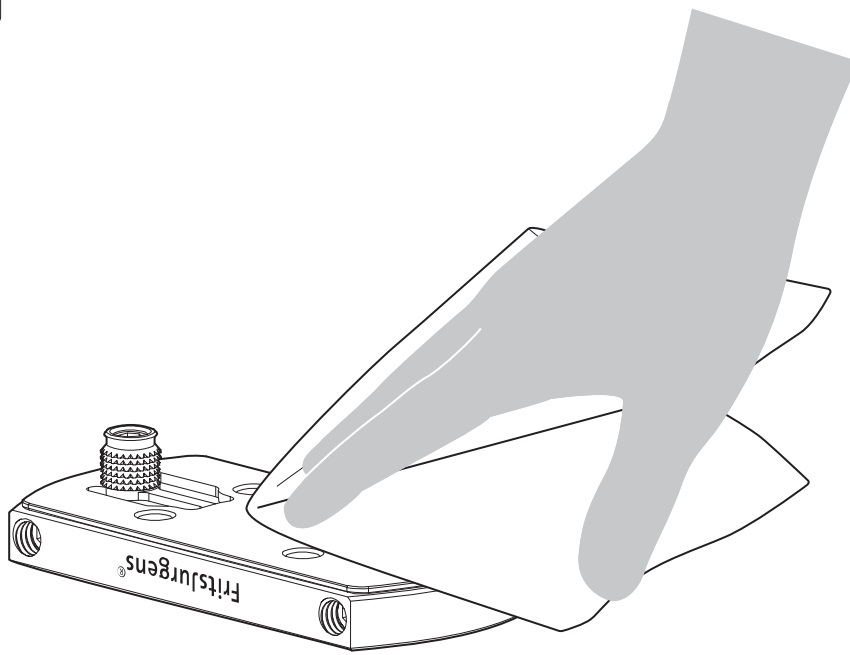
30 mm (13/16")



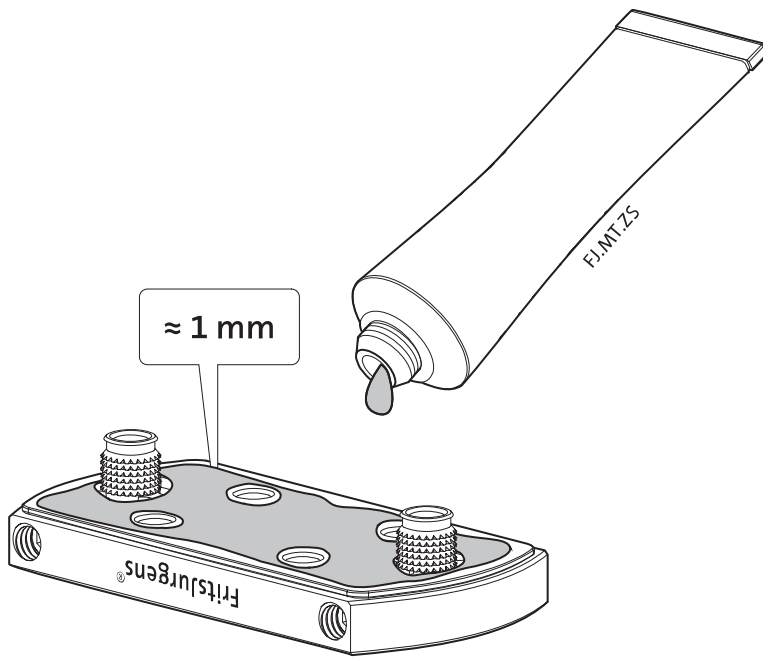


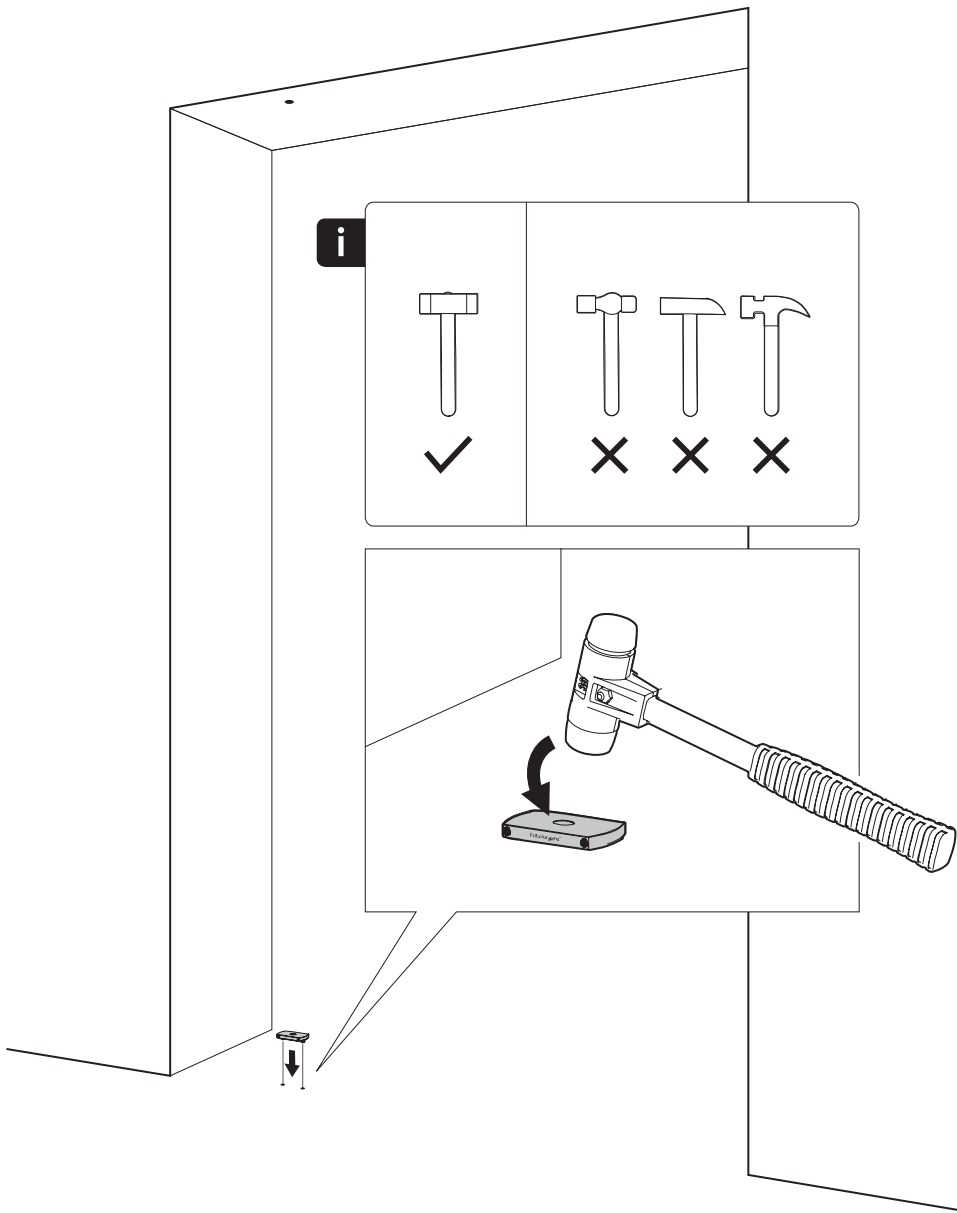


1

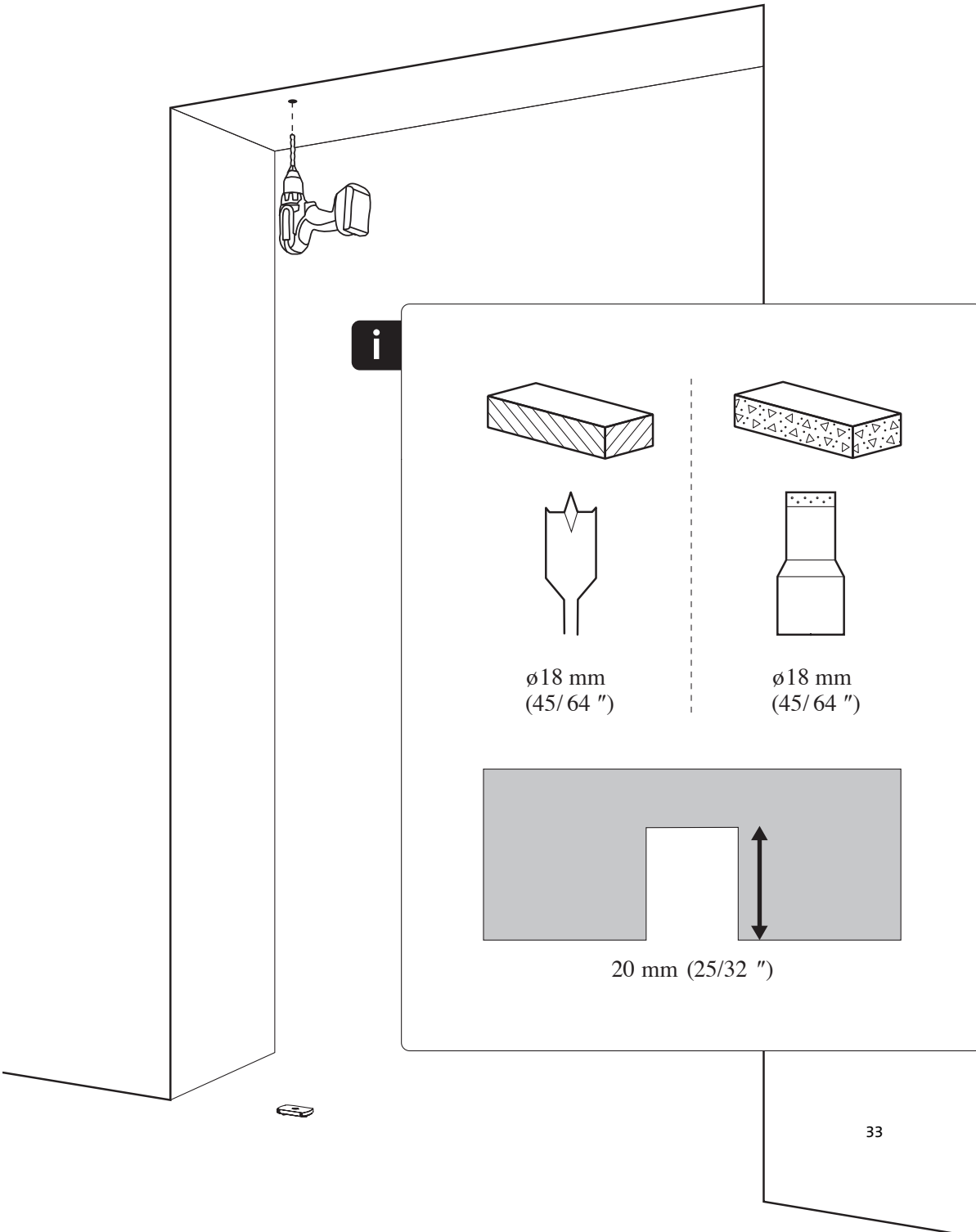
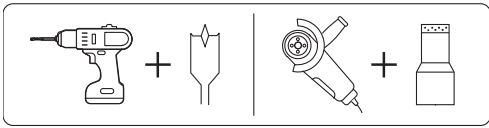


2



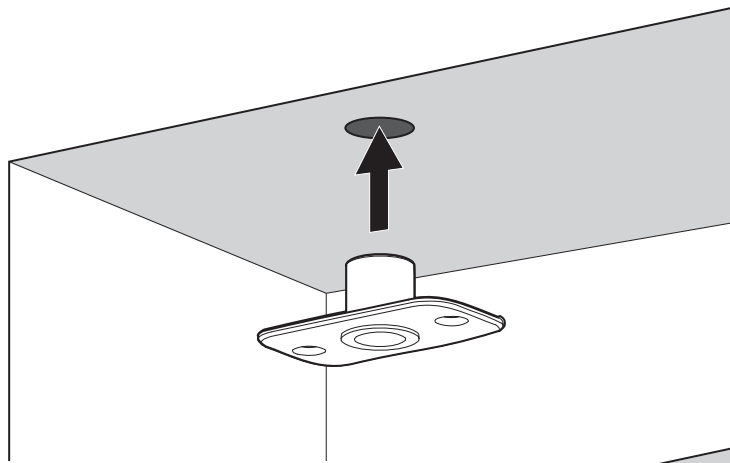




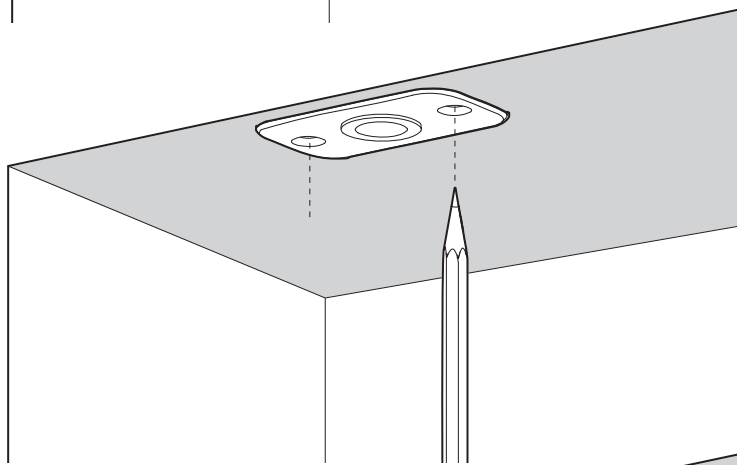




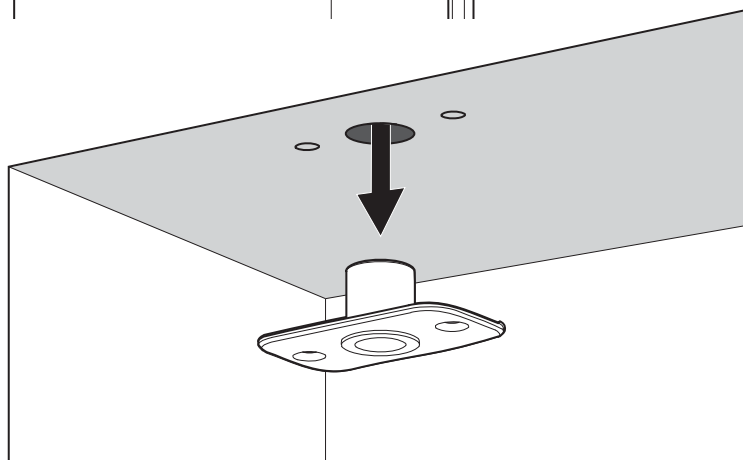
1



2

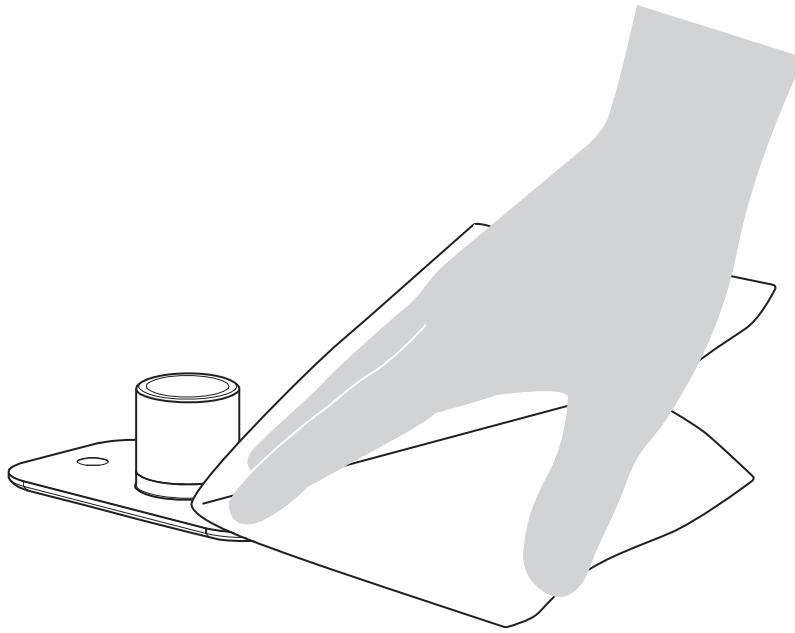


3

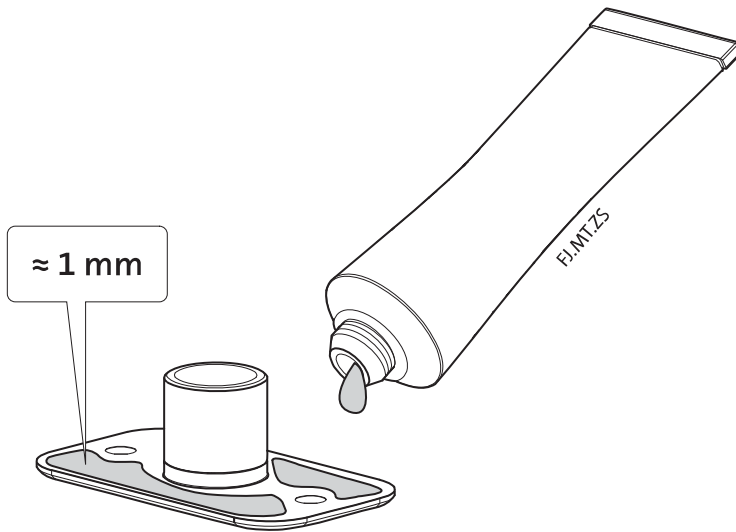


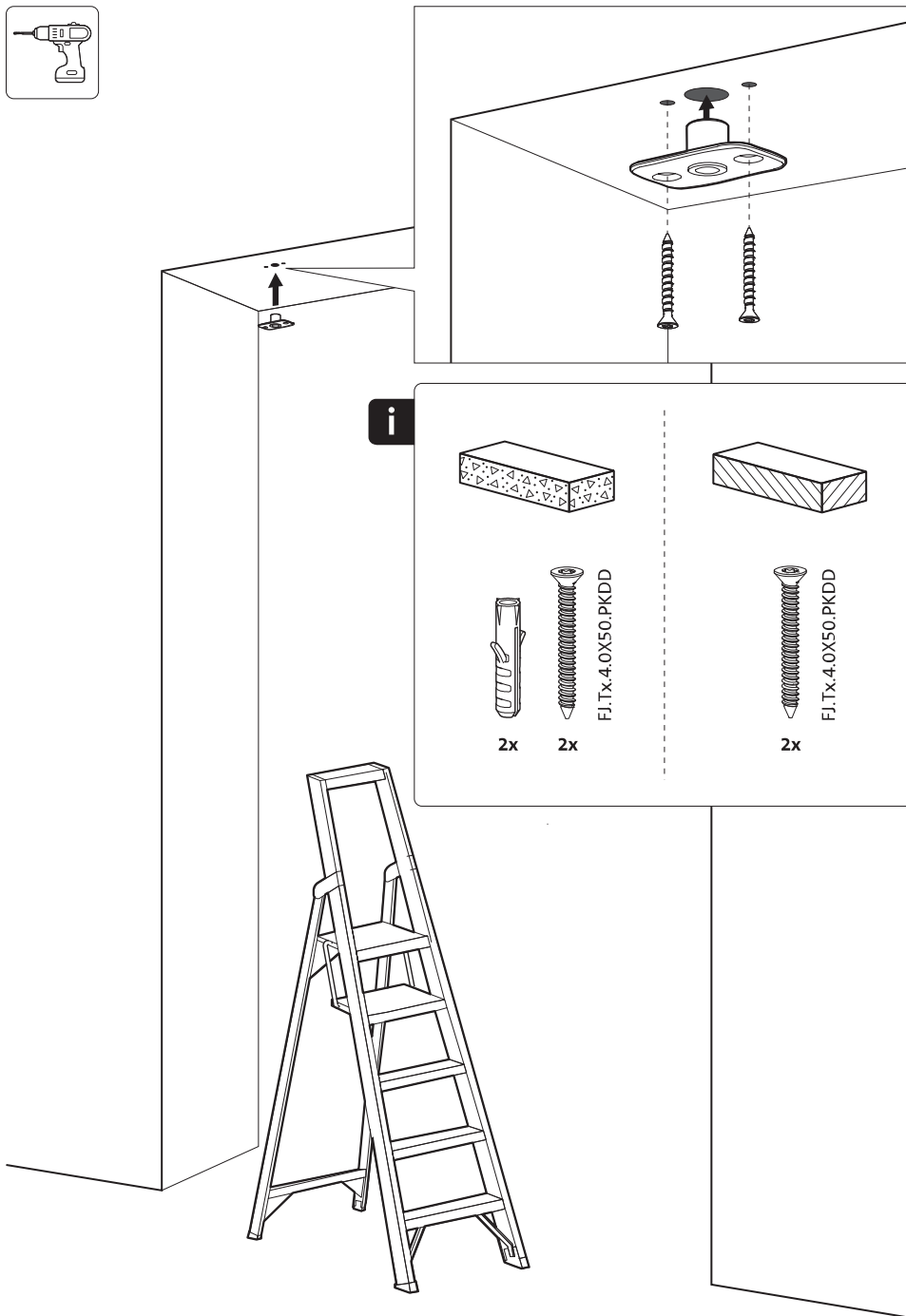


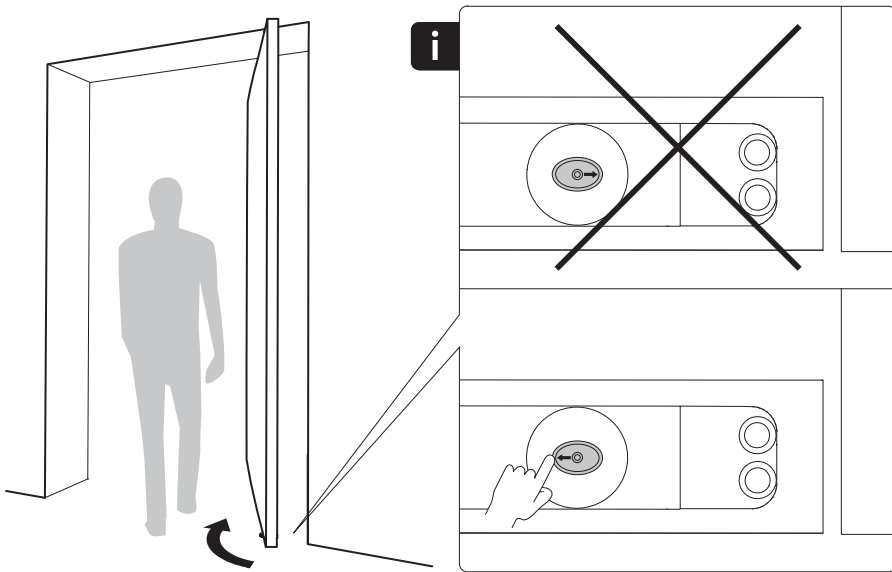
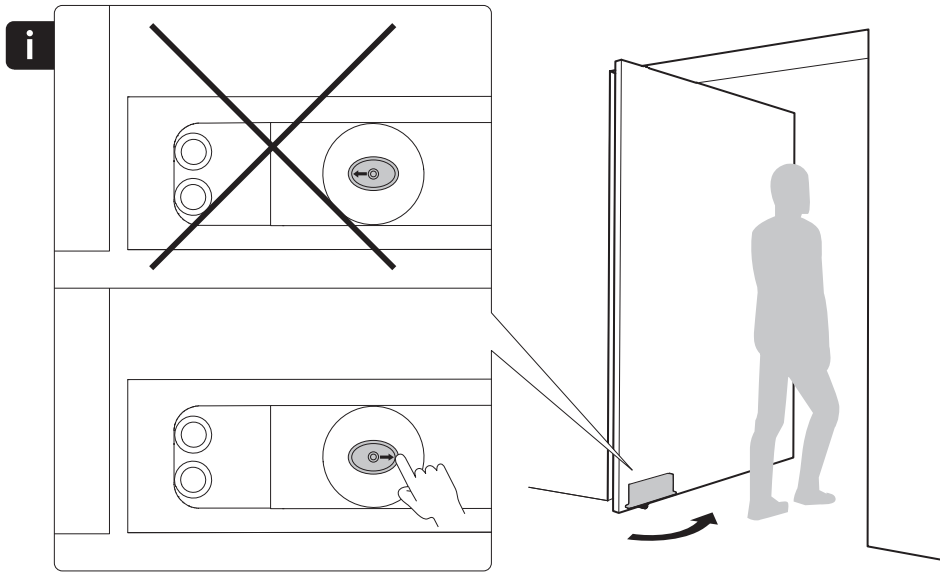
1

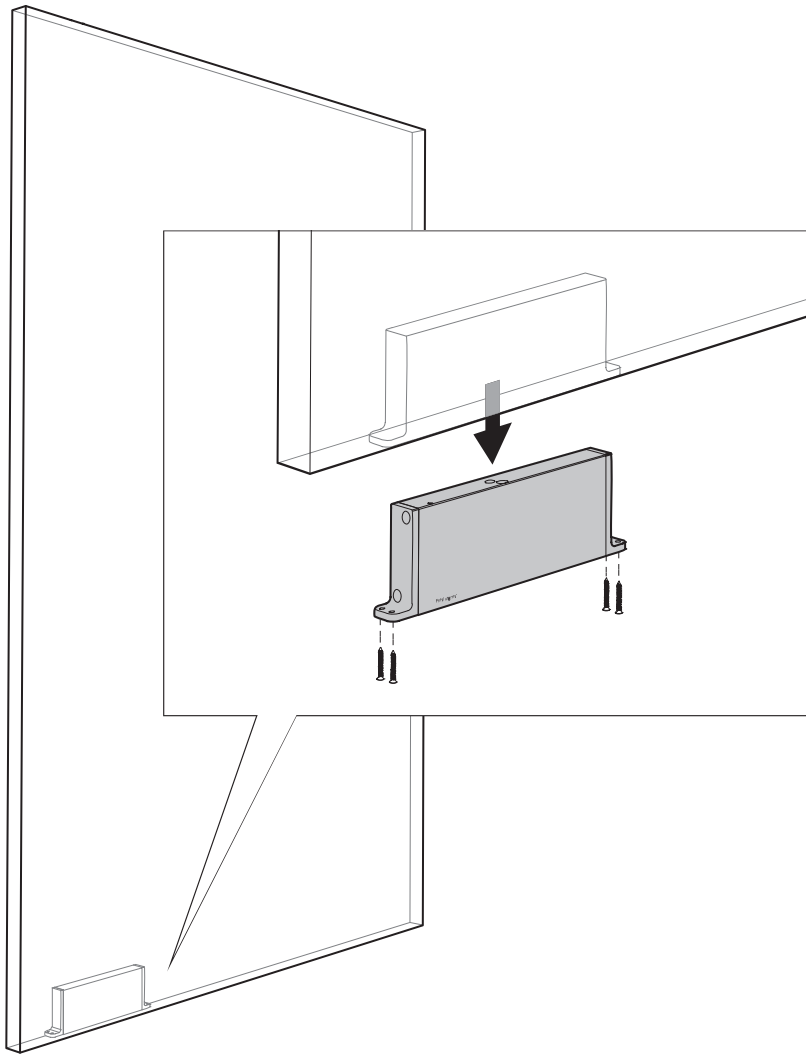


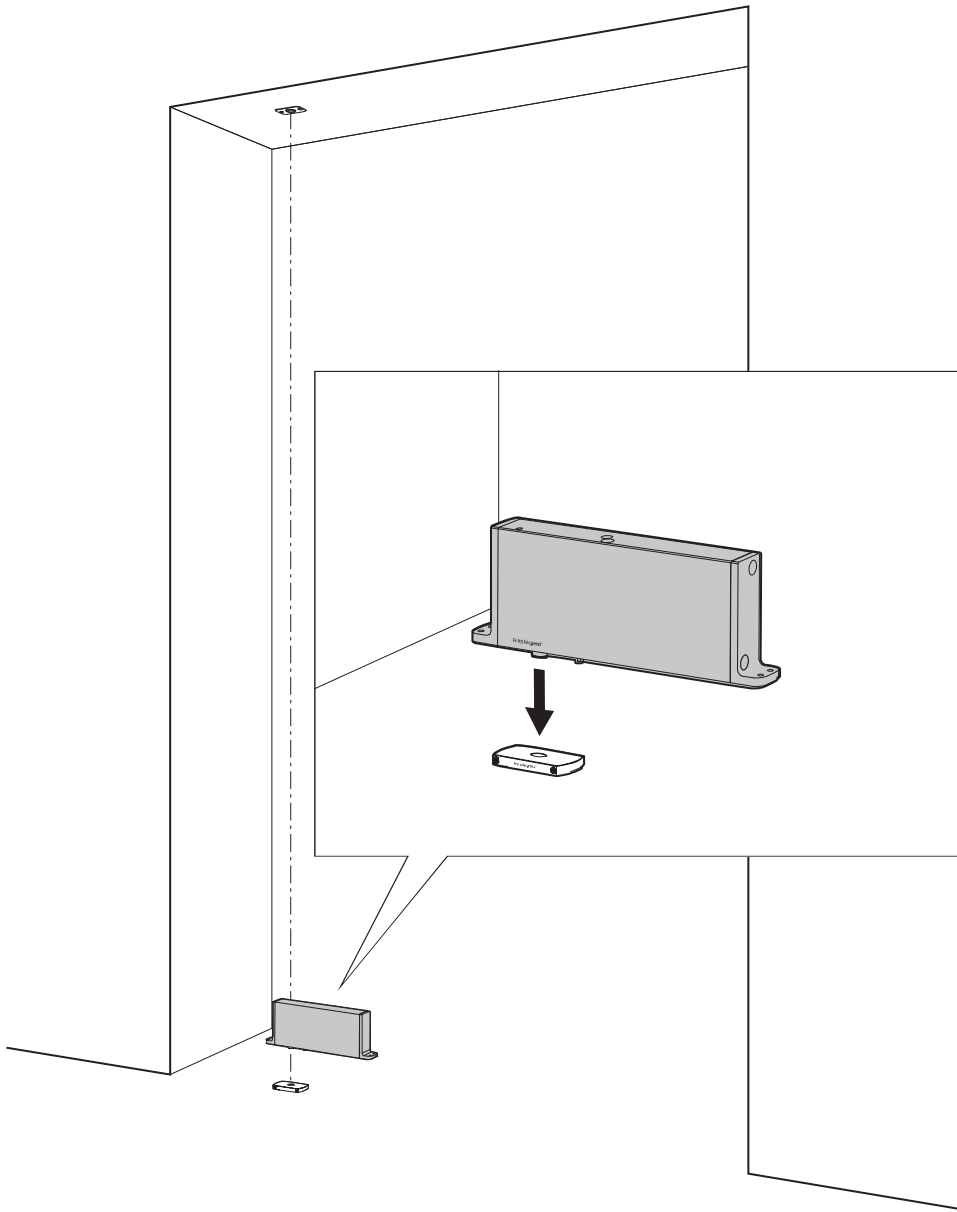
2

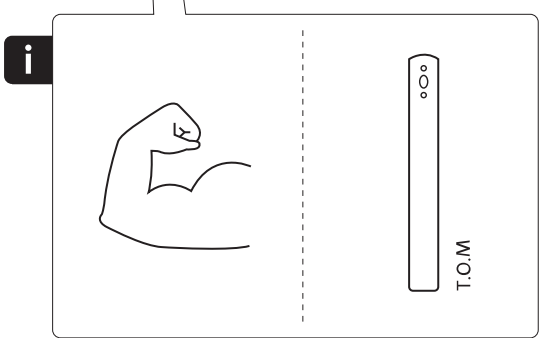
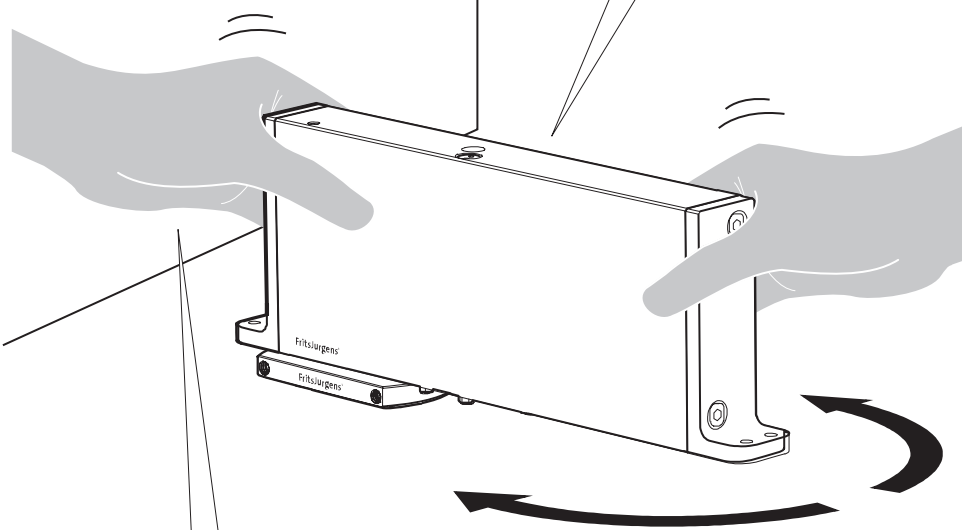
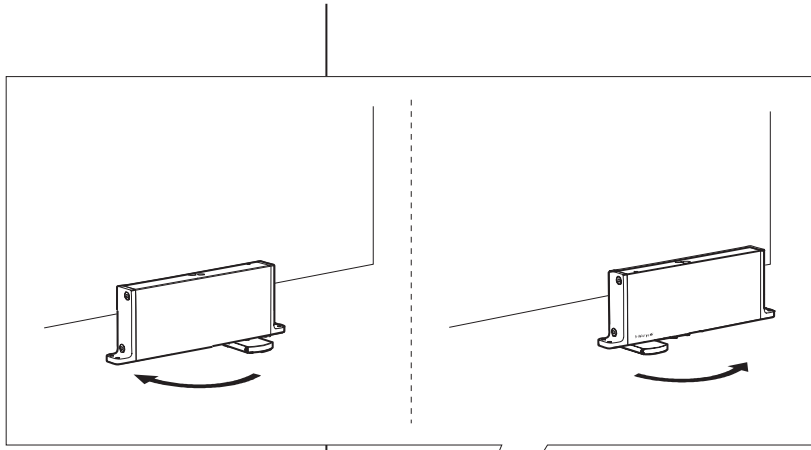




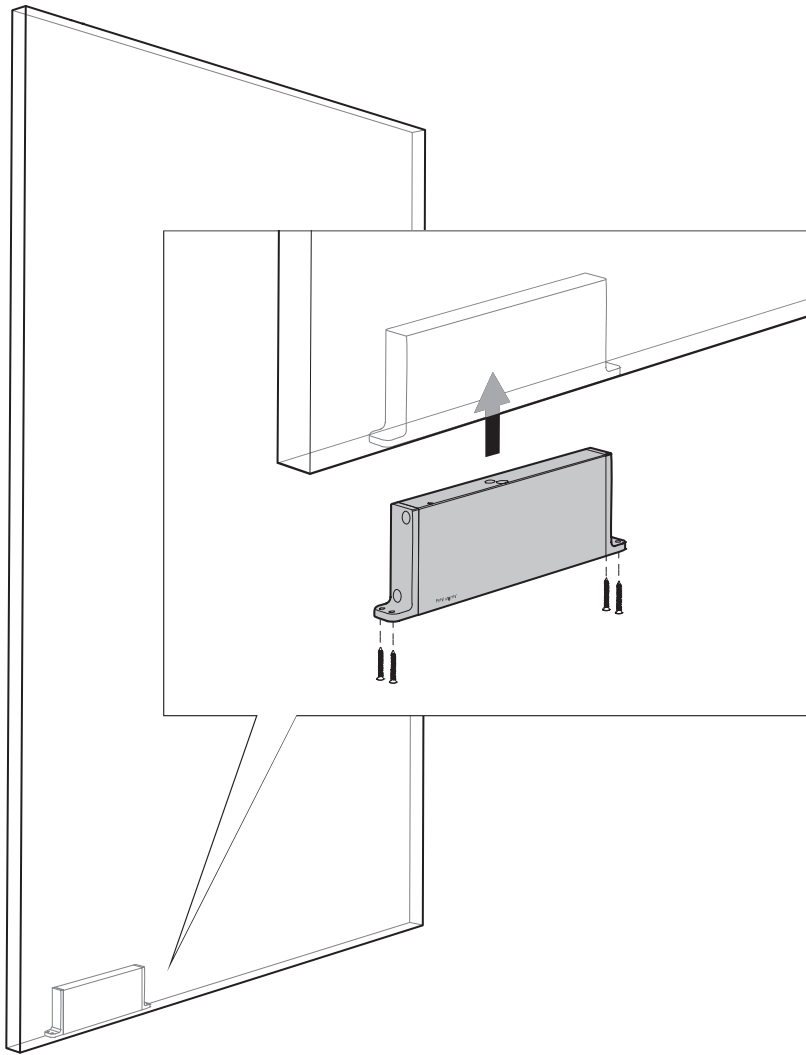


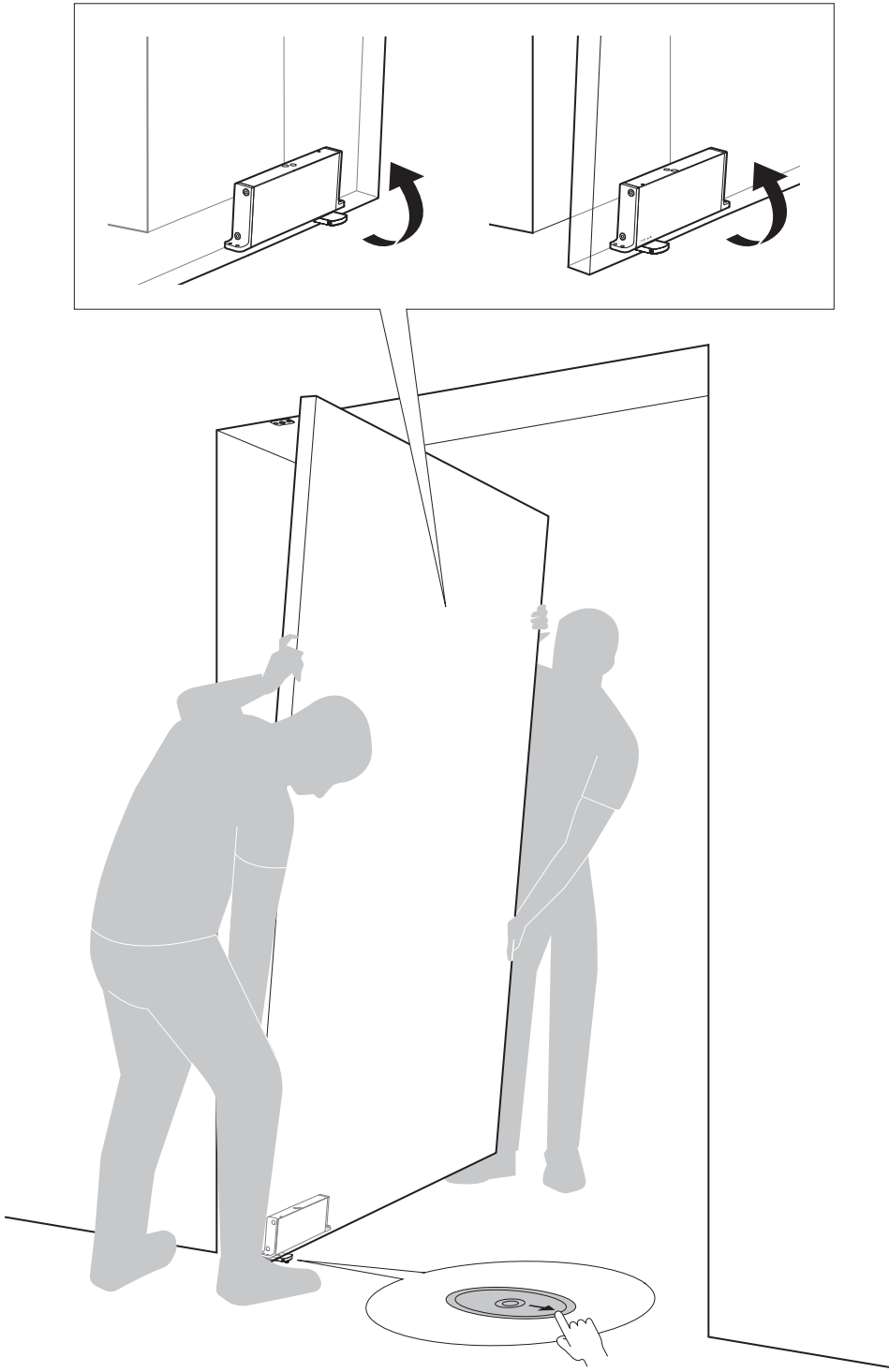


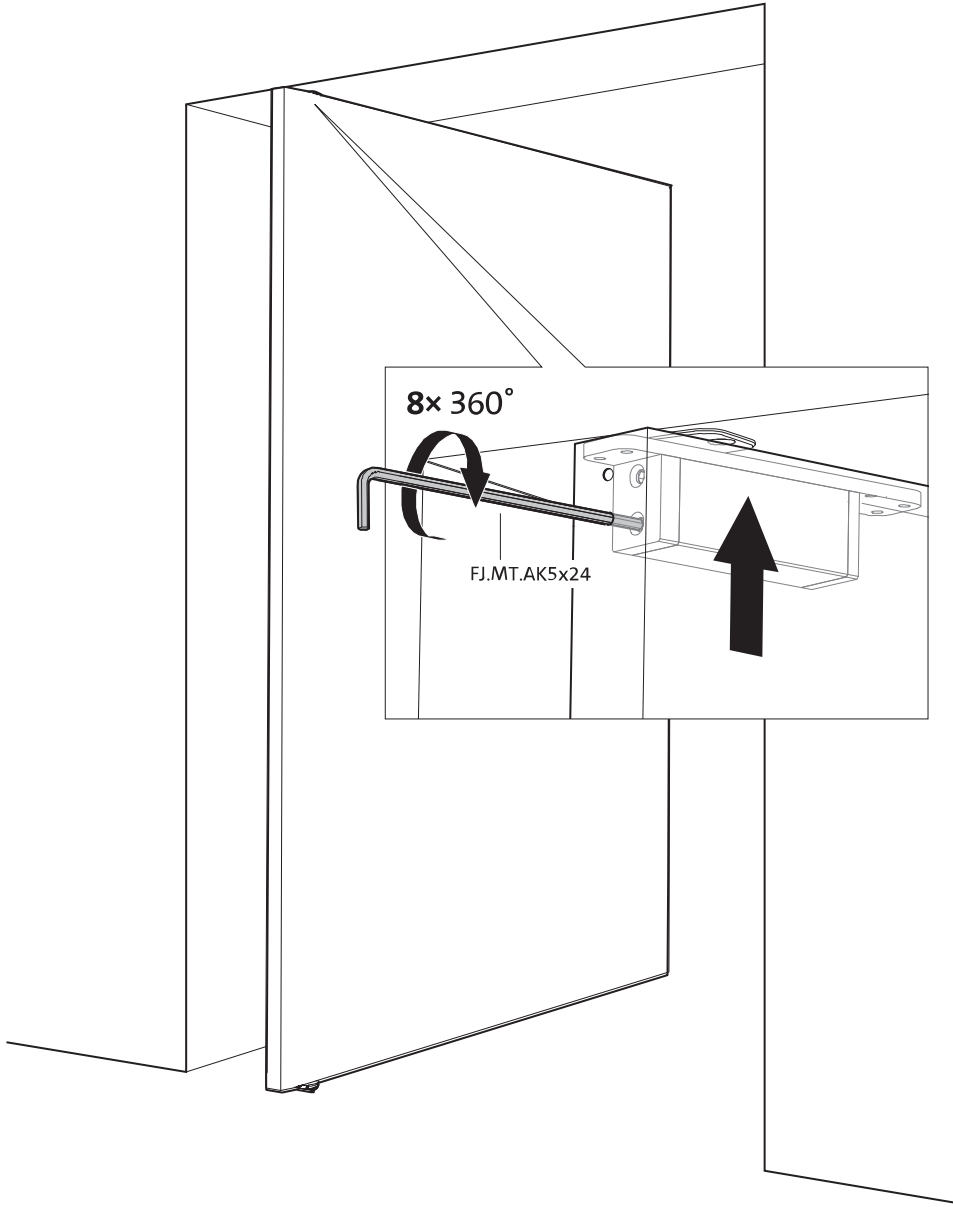
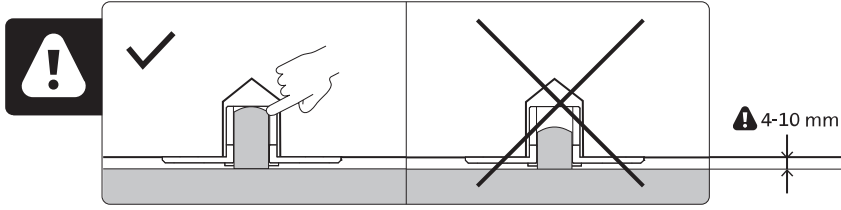


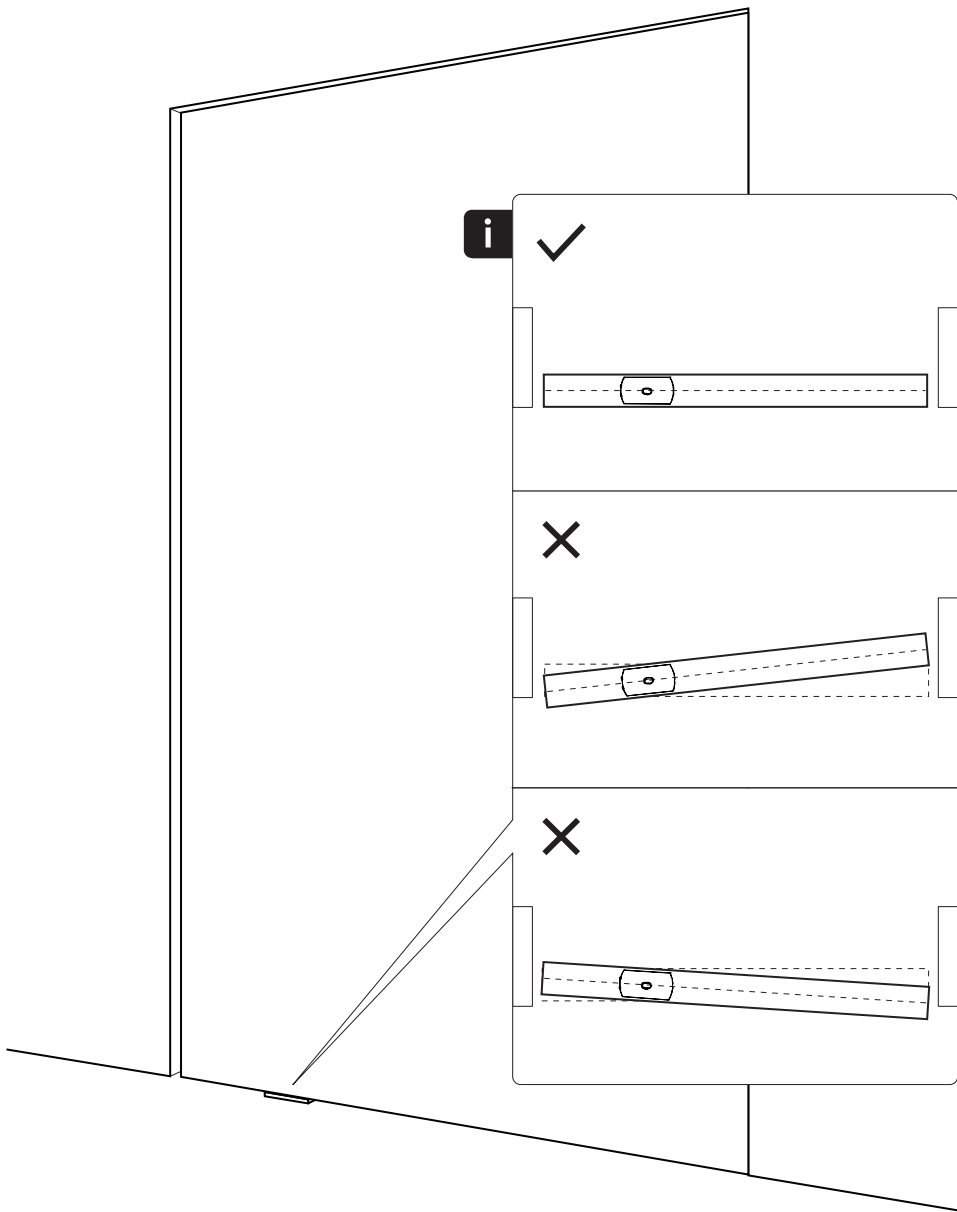


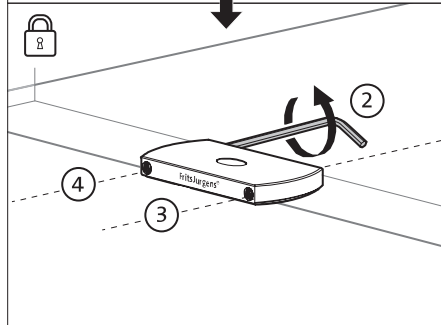
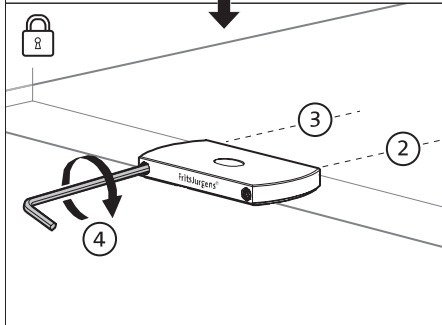
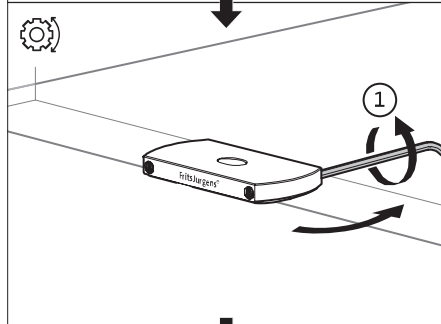
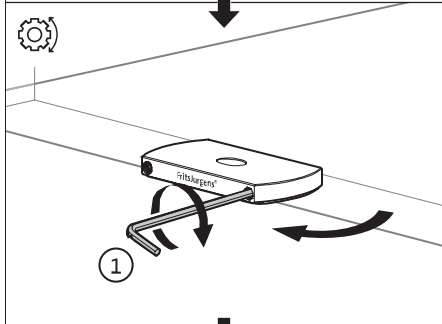
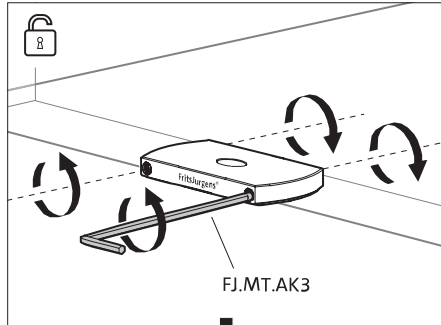
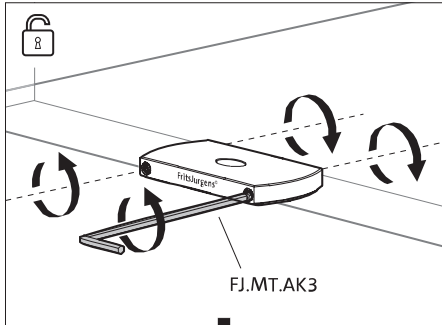
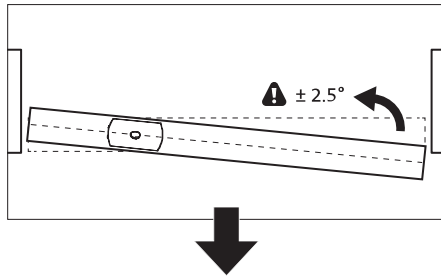
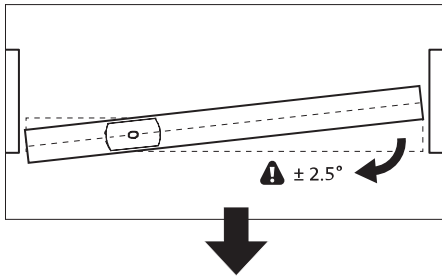


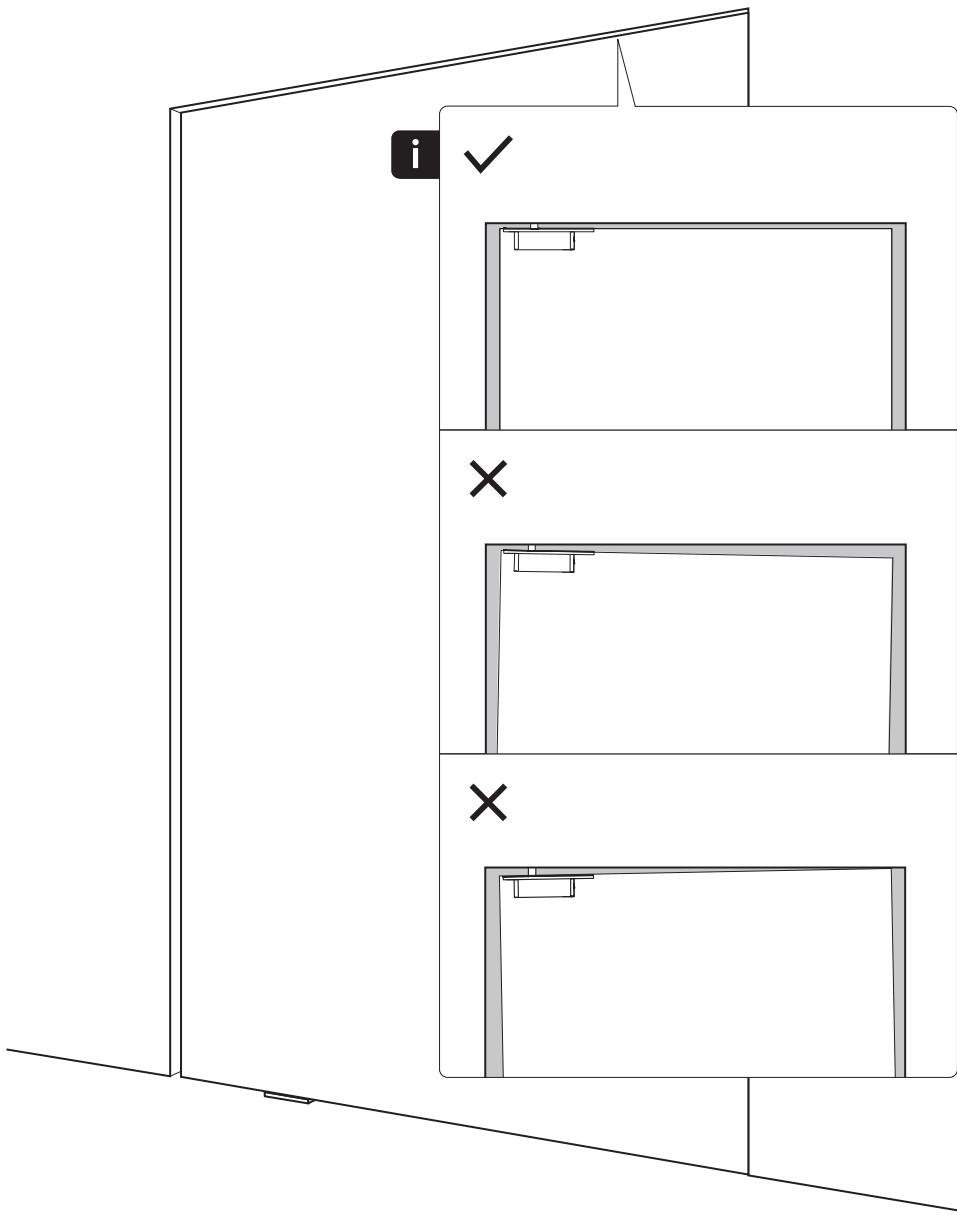


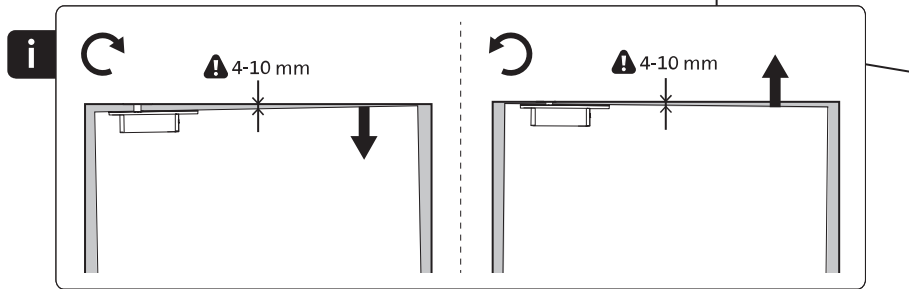
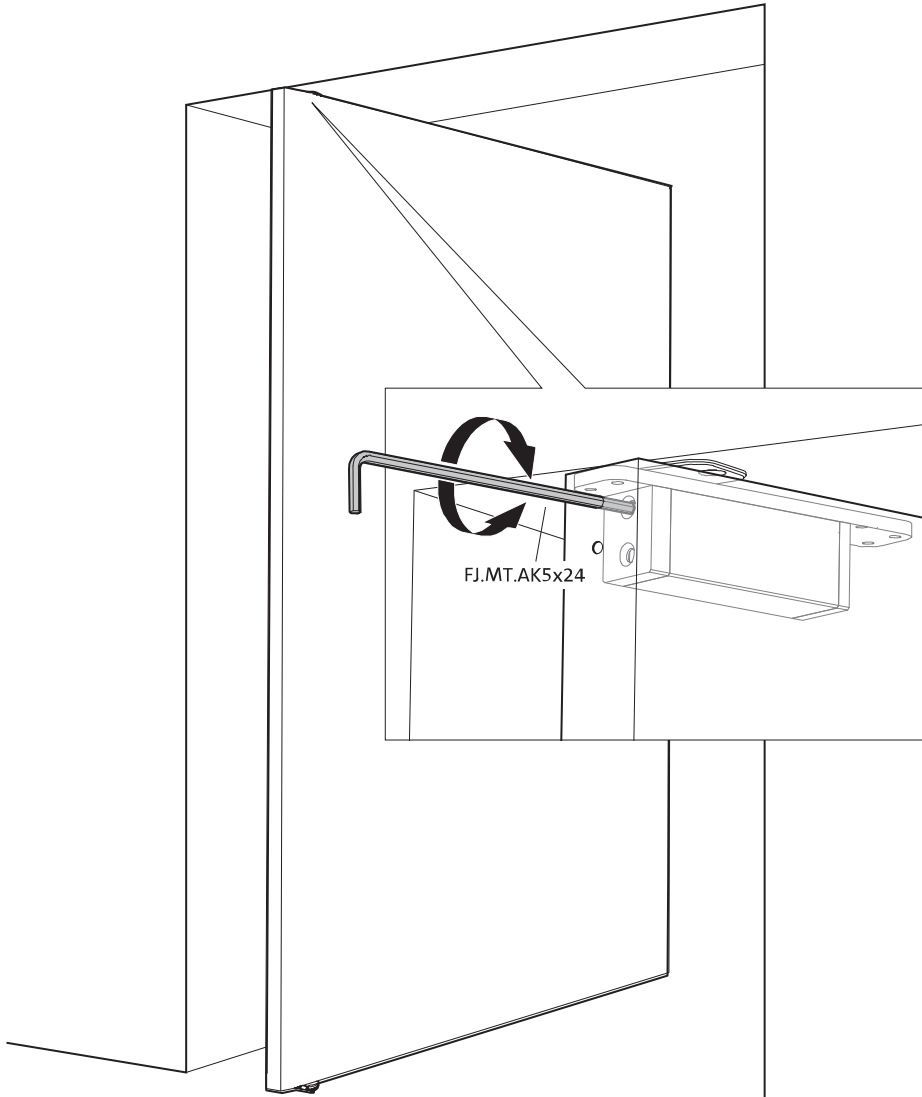


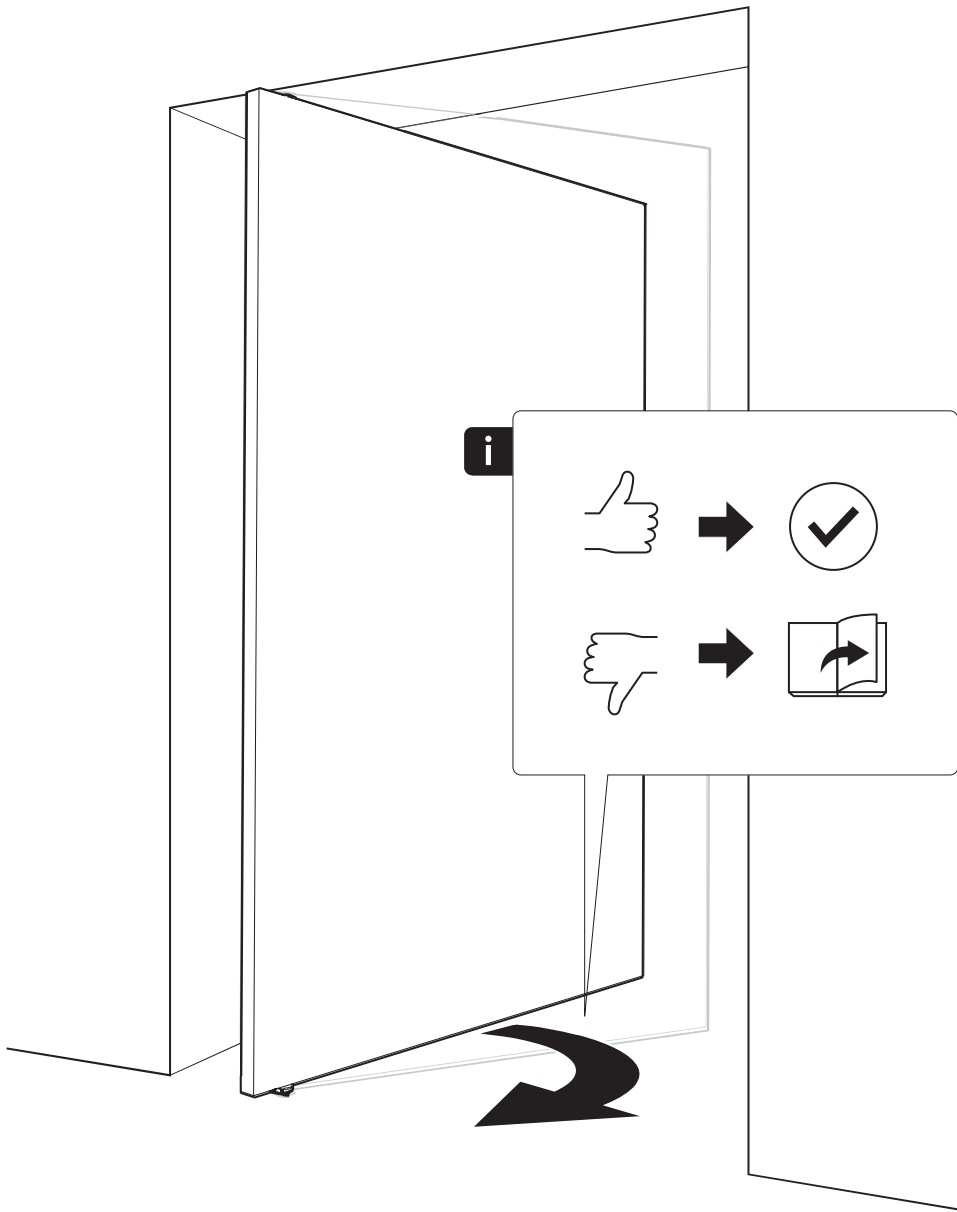








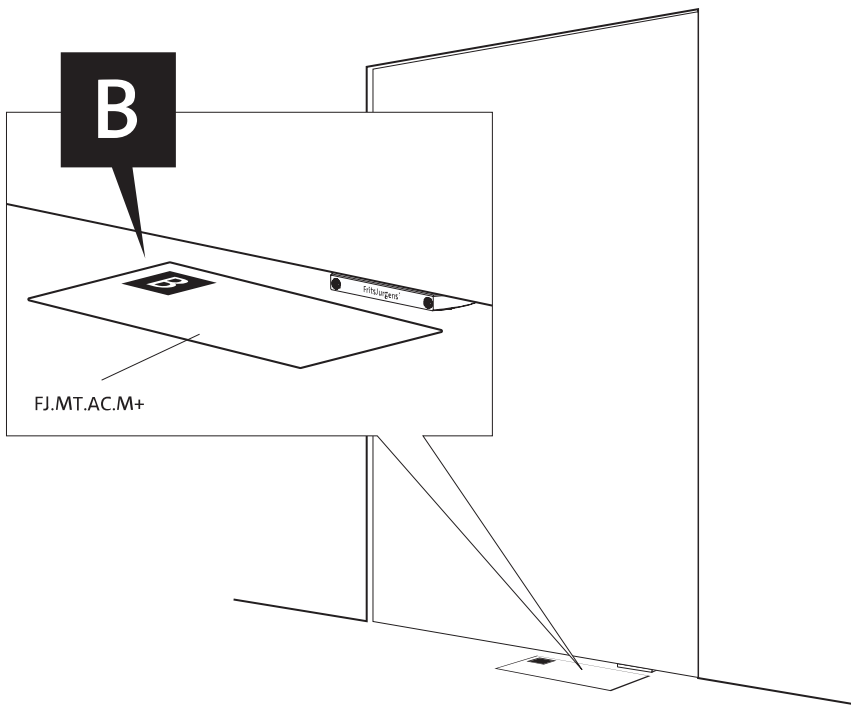
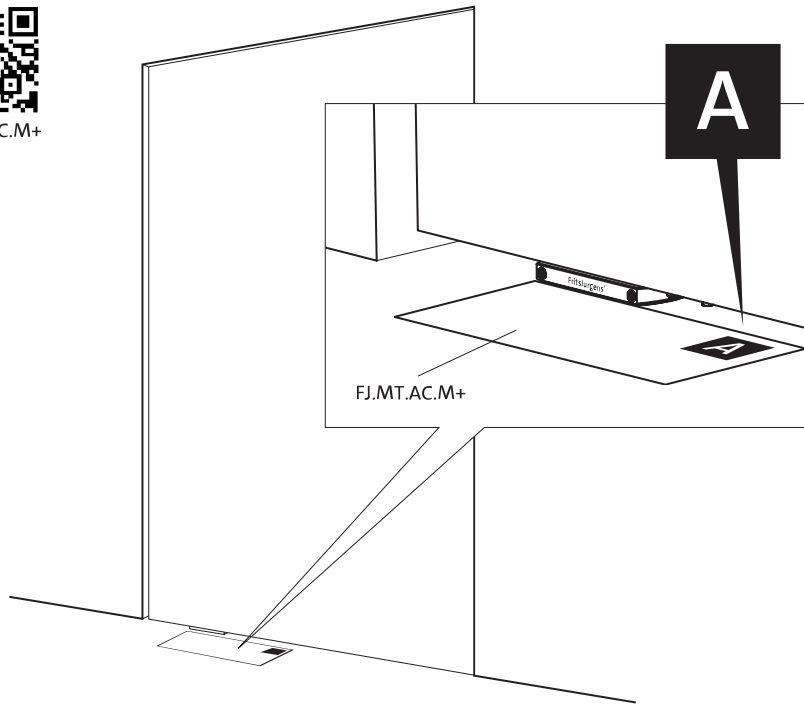


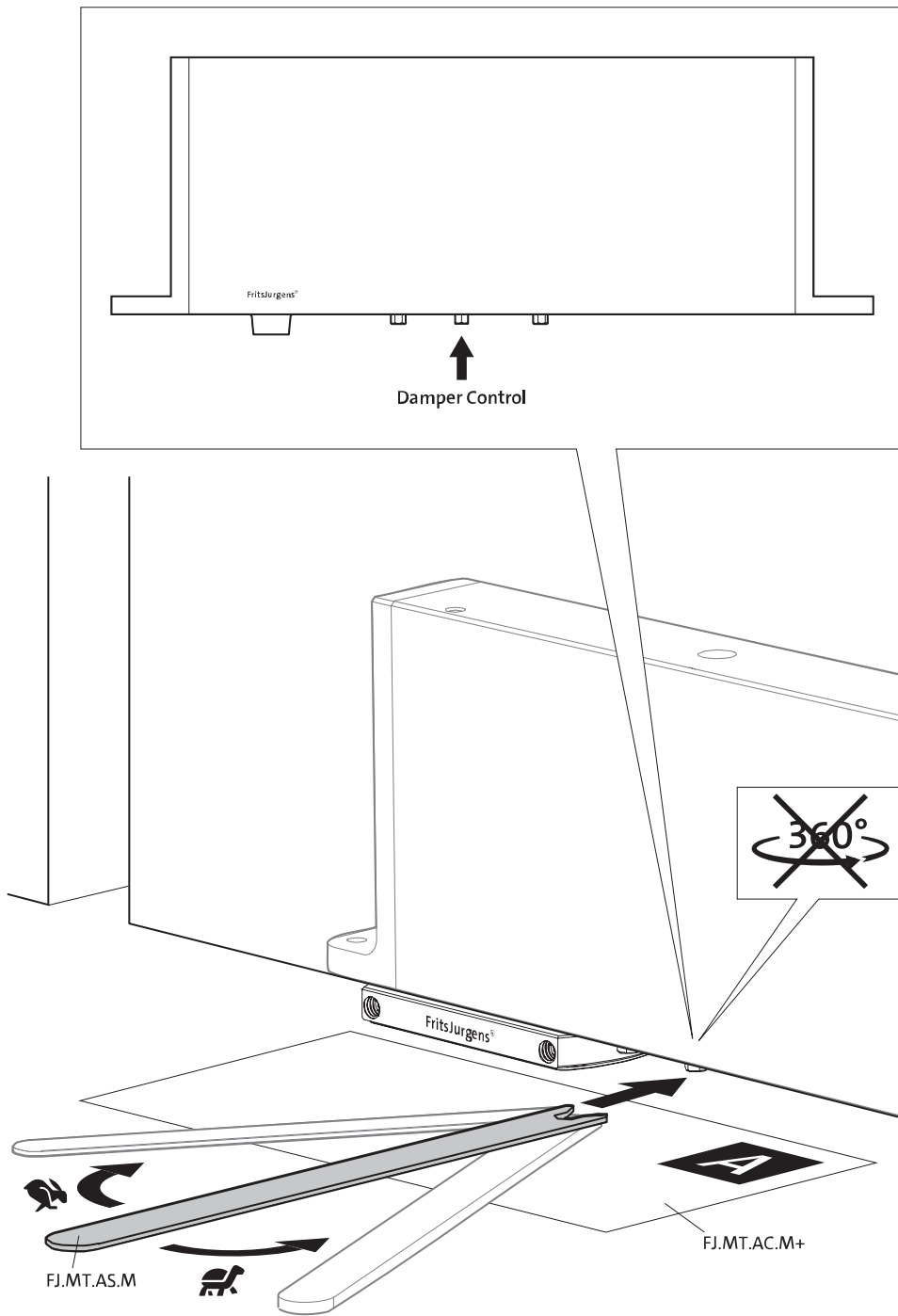


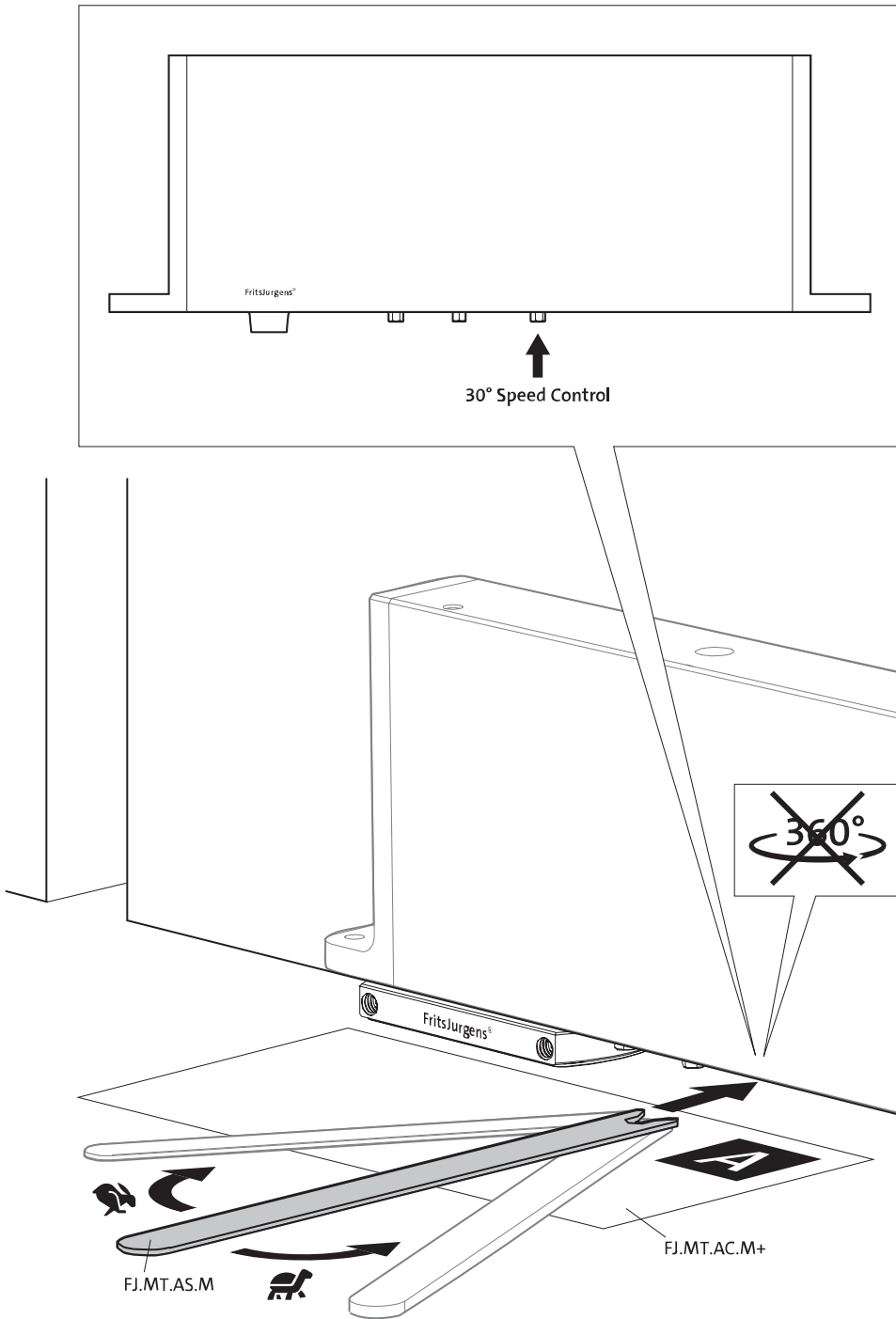


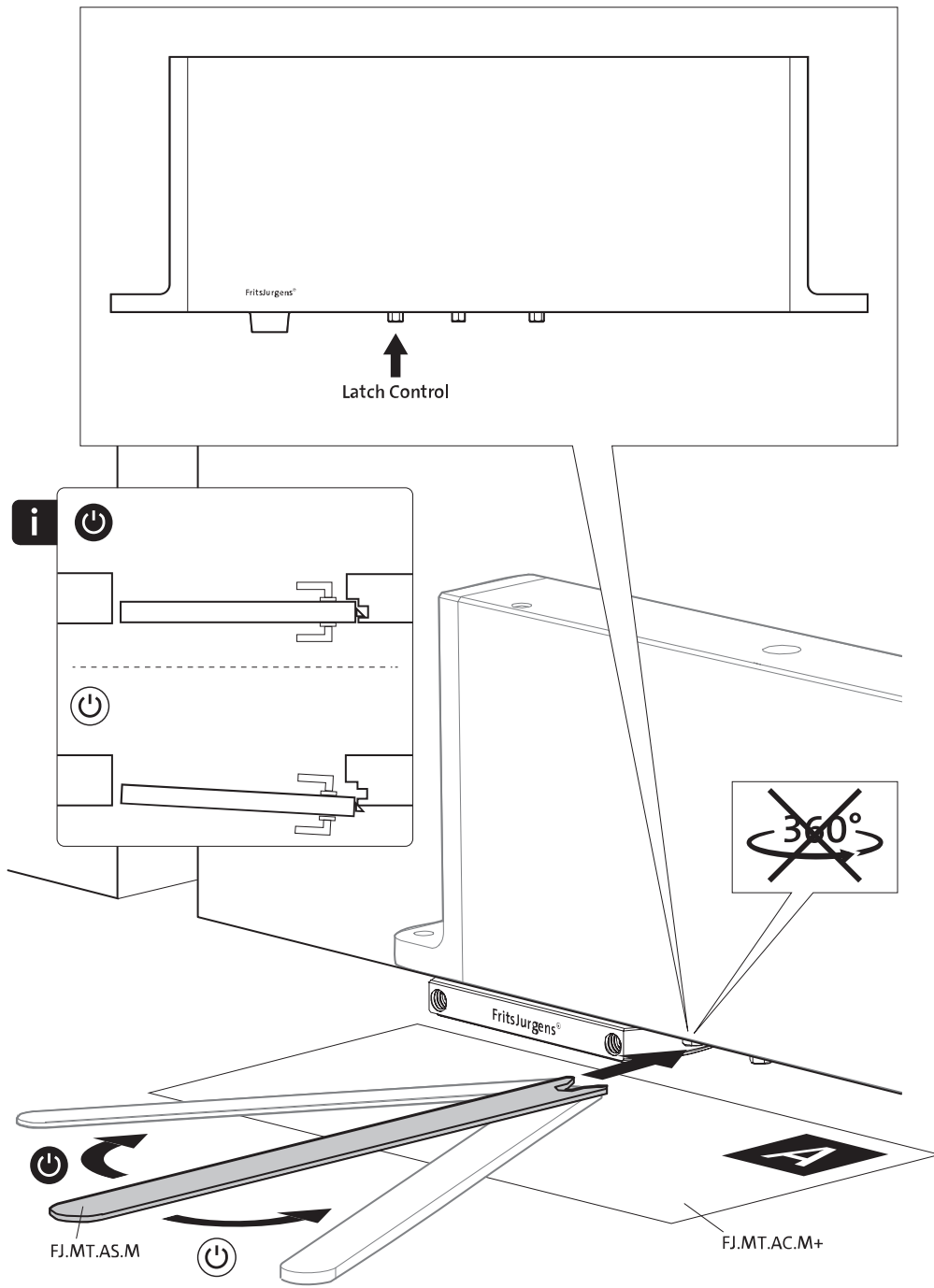


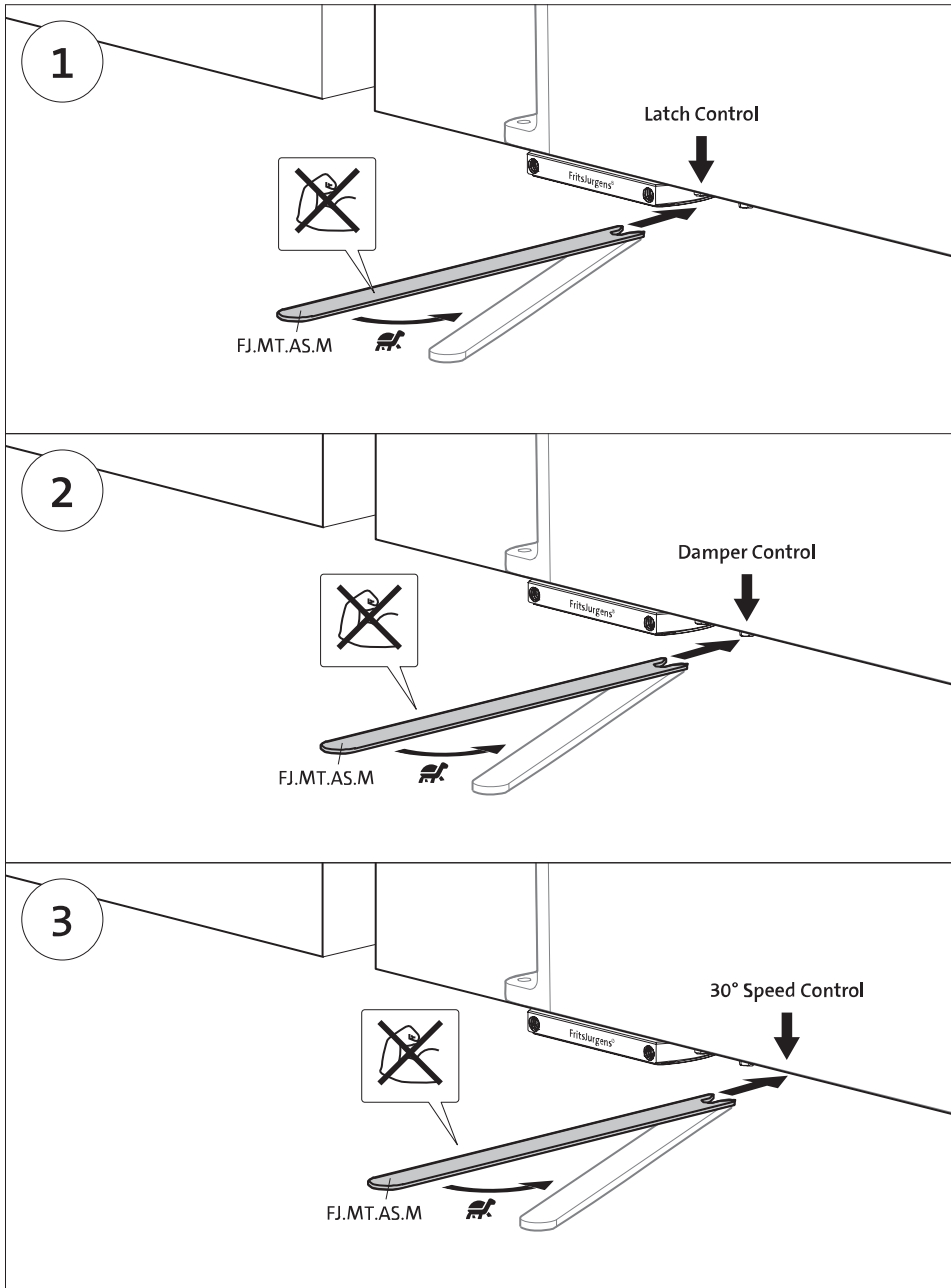
FJ.MT.AC.M+

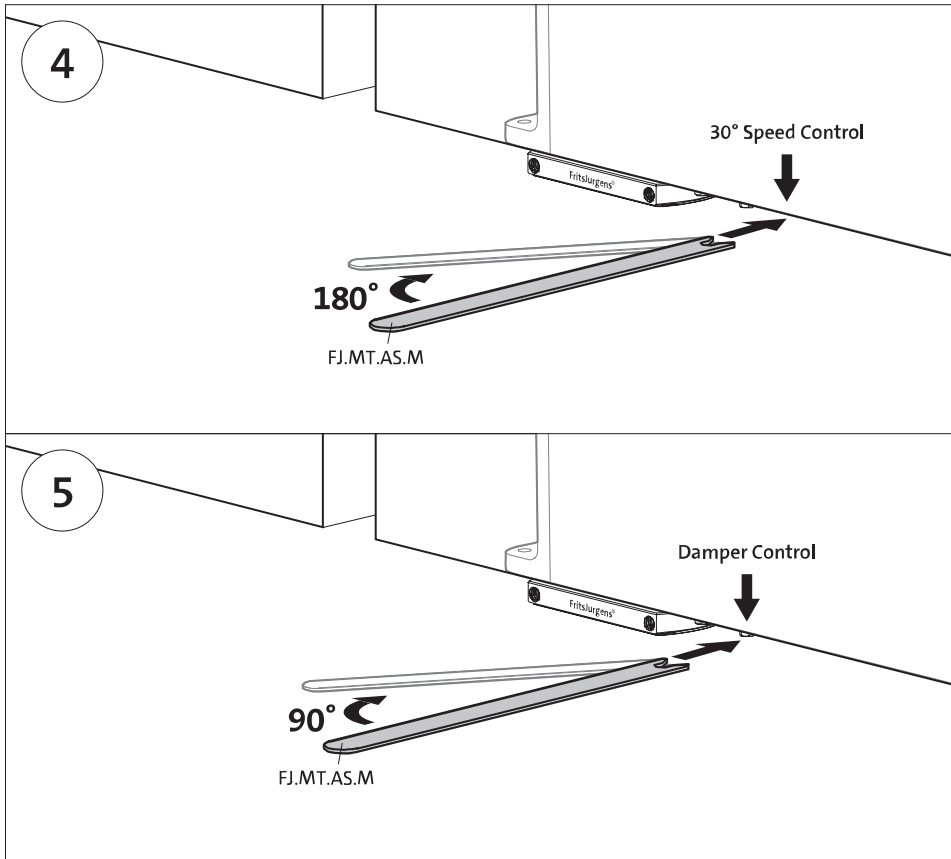




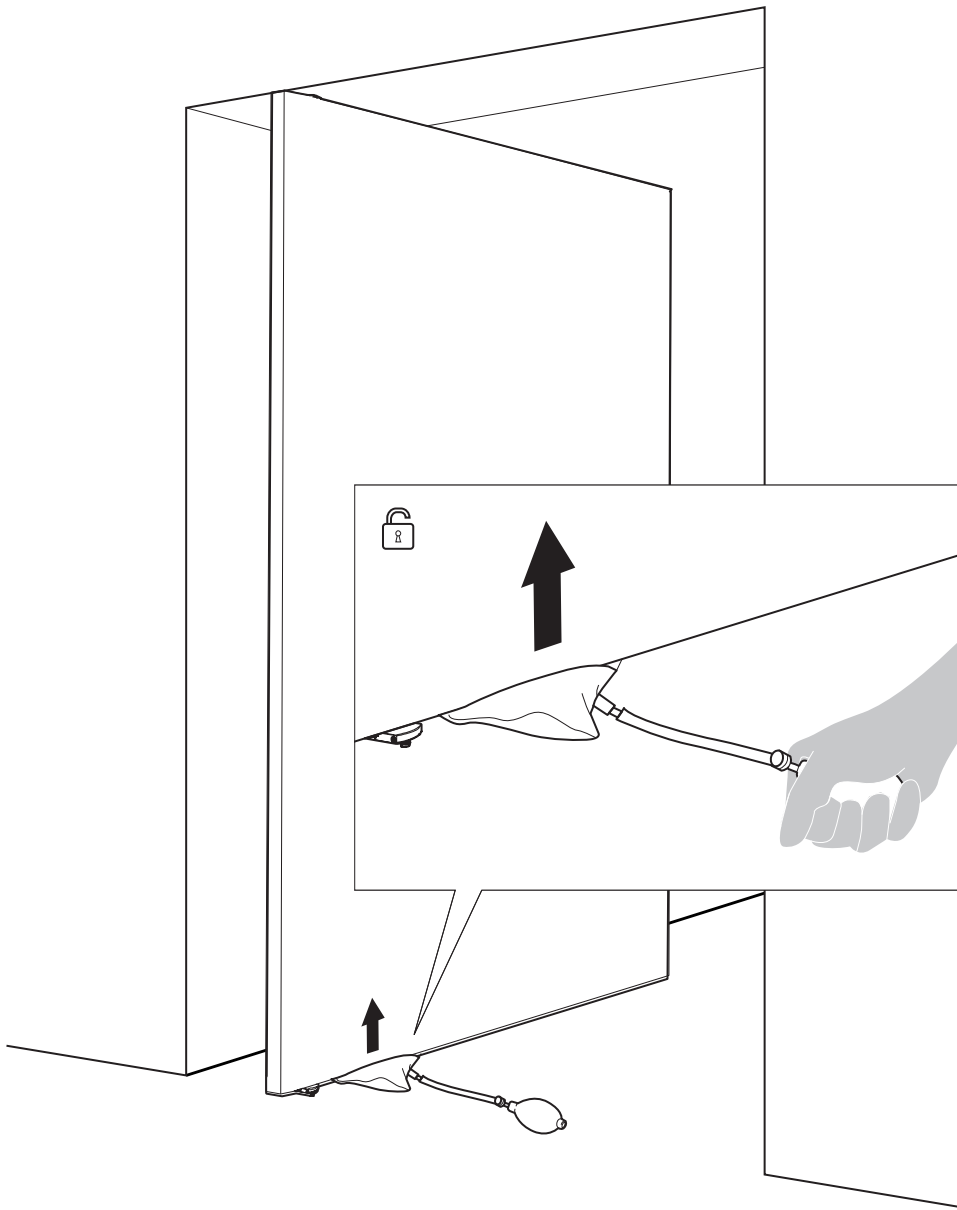




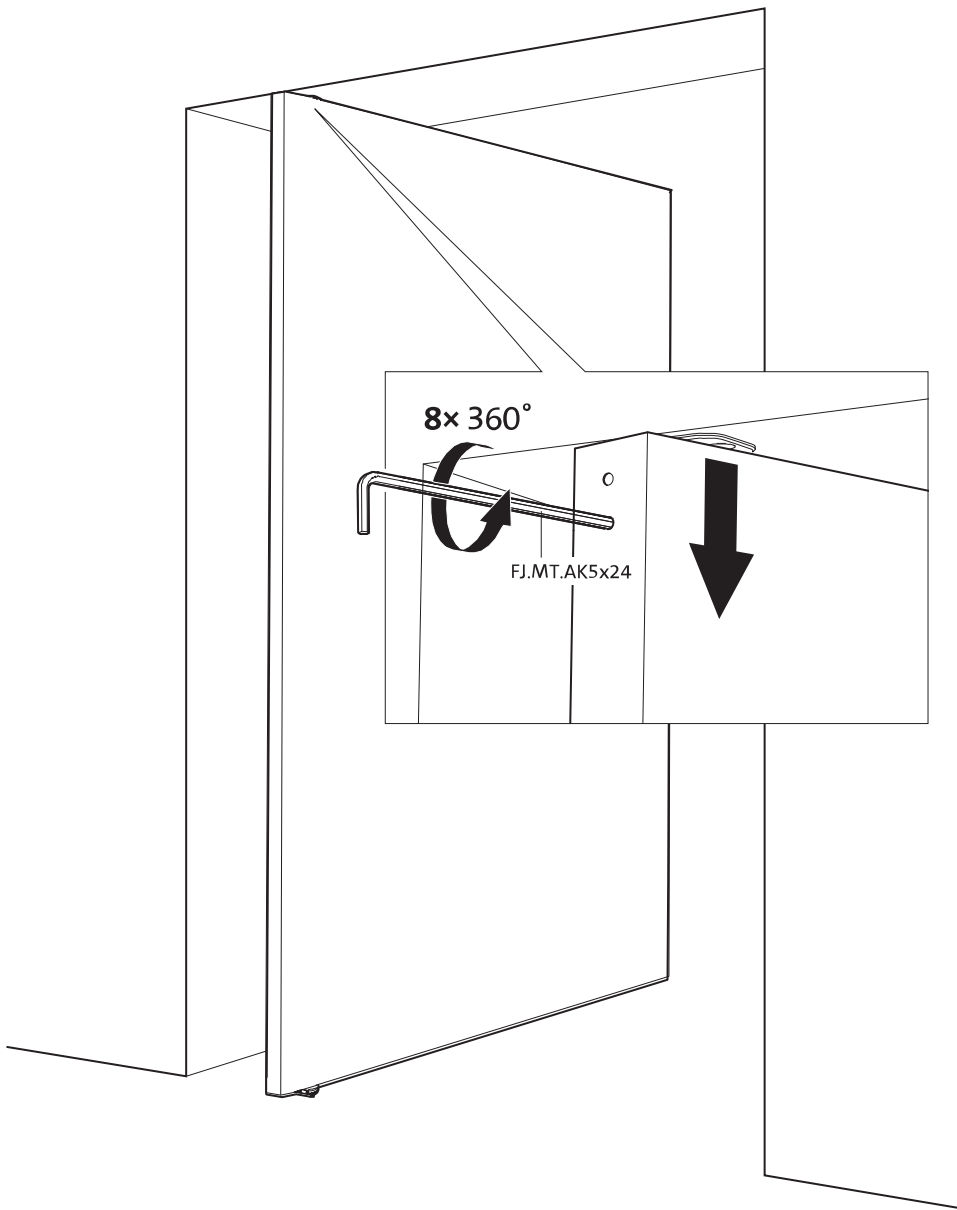


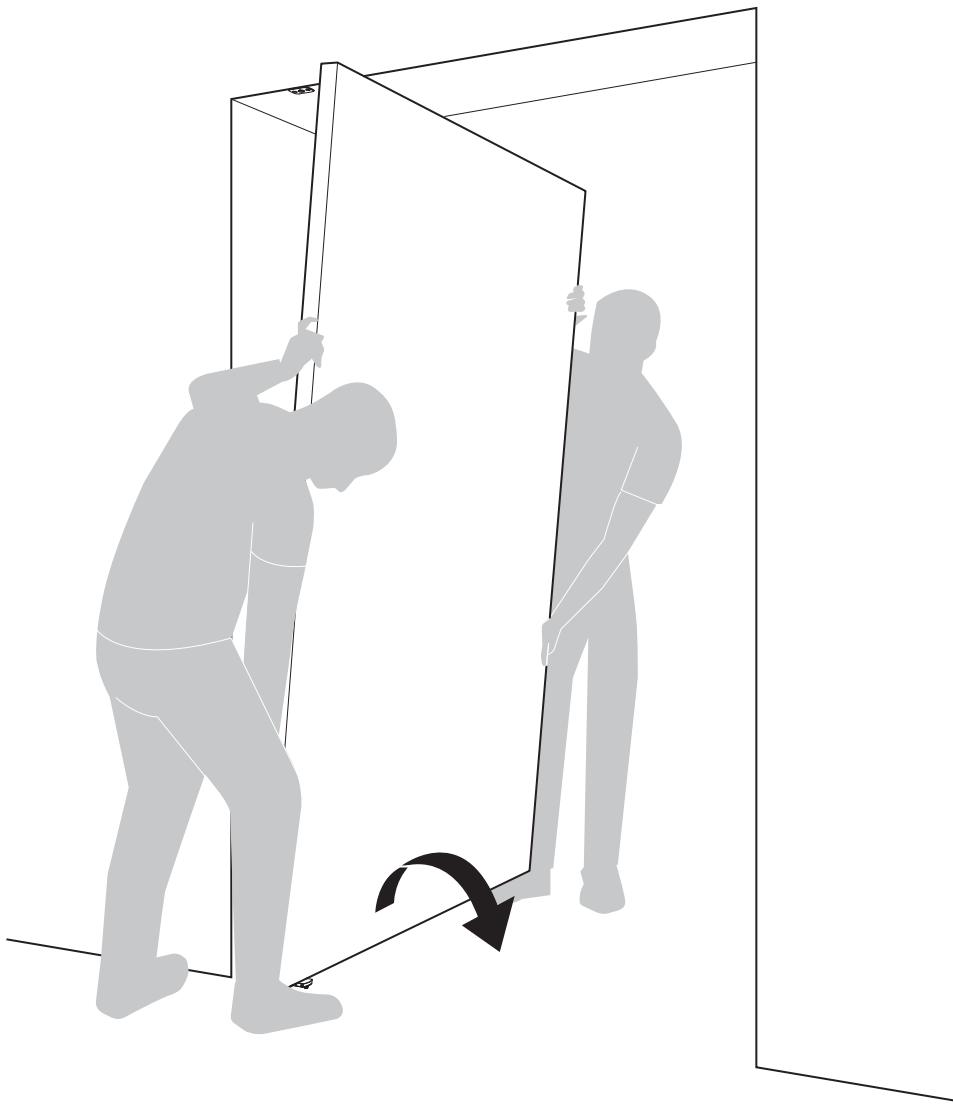


# Demontageanleitung











**FritsJurgens International**

A. Einsteinlaan 1  
Die Niederlande  
9615 TE Kolham  
+31 598 343 410  
info@fritsjurgens.com

**FritsJurgens Dubai Branch**

DLC-OP-A2-4-0029  
Dubai South  
Dubai  
Vereinigte Arabische Emirate  
+971 4 820 8106  
+971 58 137 2611  
dubai@fritsjurgens.com  
fritsjurgens.com

Copyright © FritsJurgens®  
BPM+.70.G.X.XX



8 719325 750645