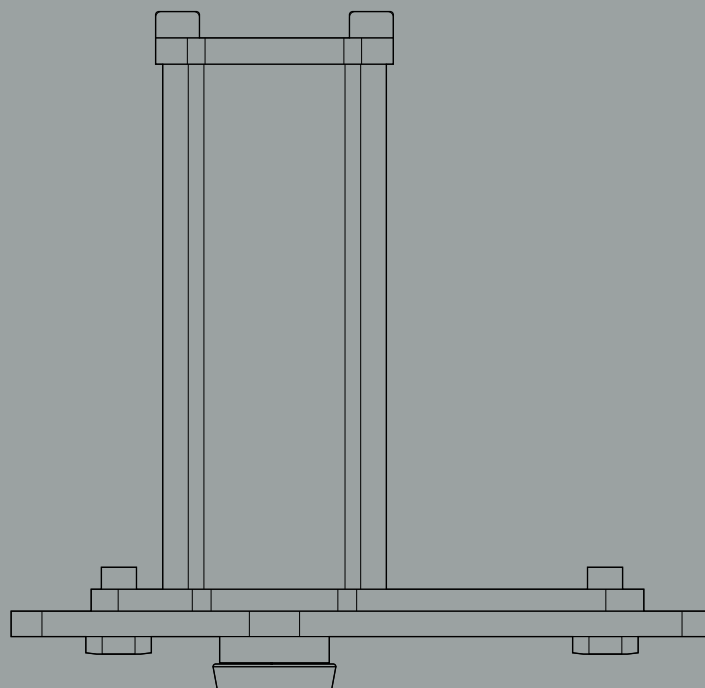


System 3

Technical documentation

Functionalities and specifics



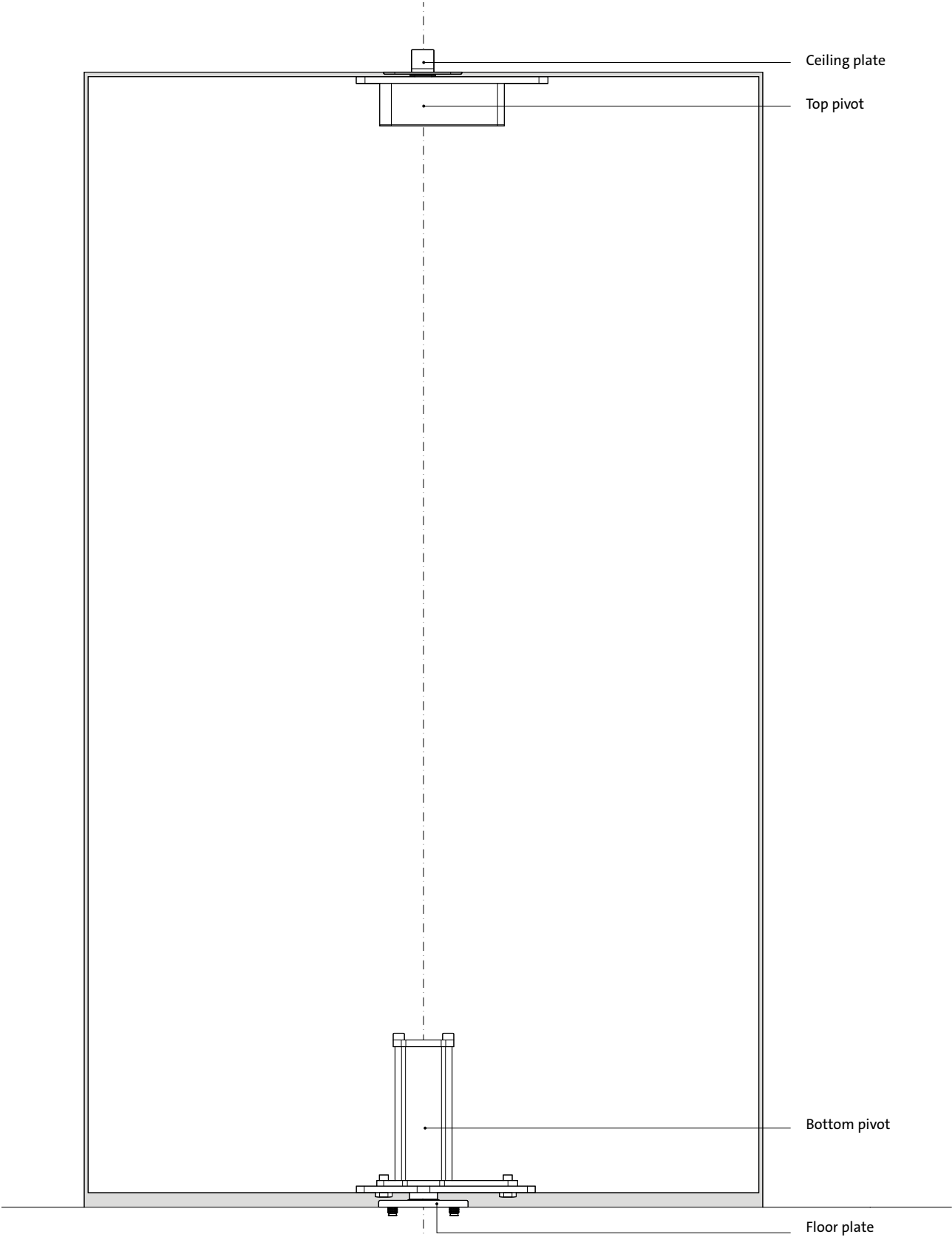
Overview	3
Components	4
Functions	5
Bottom pivots	7
Variants	8
Top pivots	9
Installation inside the door	10
Installation in the head jamb	10
Ceiling plates and Receiver	11
Ceiling plates	12
Receiver	12
Floor plates	13
Installation on the floor	14
Technical checklist	15
Top gap	16
Side gaps	17
System 3 weight classes table	18
Milling and components	19
System 3 70 mm Class G	20
Top pivot 70 mm Class G	22
Top pivot Reversed	24

Overview

System 3 is a 360° rotating pivot system with various hold positions, ideal for pivoting walls.

Components

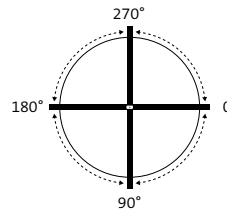
Our systems always consist of the following components:



Functions

Rotation	Revolving 360°
Hold positions	0°, 90°, 180° and 270°
Free swing	No
Self-closing	Self-closing from below each 45° angle

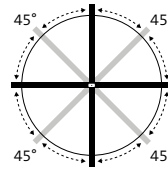
Rotation



Revolving

Revolving means that the pivot door can rotate a full 360°, with hold positions at 0°, 90°, 180°, and 270°.

Movement

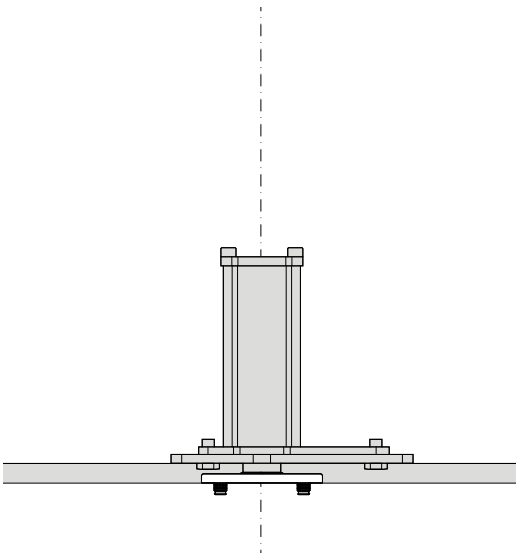


Below each 45° angle, the door automatically moves from both directions to the hold position.

Bottom pivots

It all hinges on the bottom pivot. Our bottom pivots are easily applicable to the side as well as to the middle of the door.

Variants



System 3 70 mm Class G

160 × 32 × 143 mm

Placement	Middle placement
Pivot point	Middle placement
Cover plates	No
Door weight*	Class G: up to 500 kg
Radial adjustment	Yes, 2.5° to the left and 2.5° to the right

Compatible with

Top pivots	Top pivot 70 mm Class G Top pivot Reversed
Floor plates	Floor plate squared Floor plate round

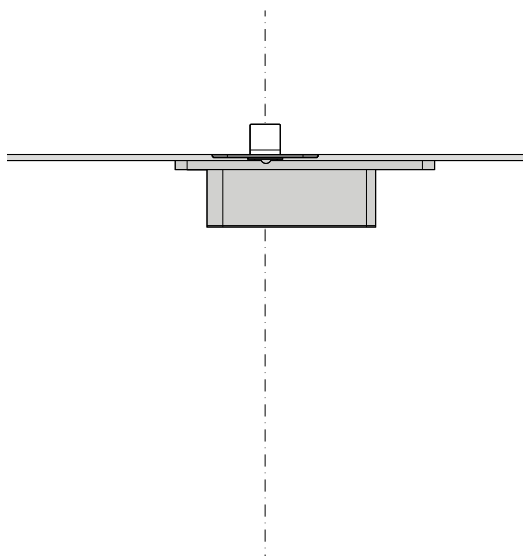
* Depending on door width, see System 3 weight classes table.

Find out more about [top pivots](#) or [floor plates](#).

Top pivots

The top pivot anchors the pivot door between the floor and the ceiling.

Installation inside the door

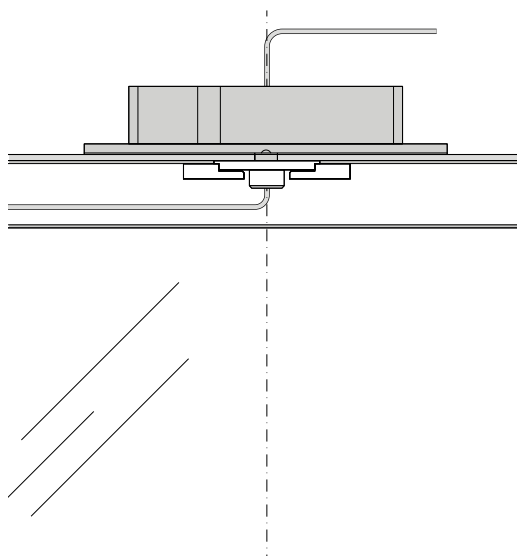


Top pivot 70 mm Class G

171.5 × 32 × 44 mm

Placement	Middle placement (for System 3)
Pin diameter	Ø15 mm
Pivot point	Middle placement (for System 3)
Adjustment	From the side of the door: 5 mm to the left and 5 mm to the right
Cable grommet	Yes, Ø7.5 mm cable entry
Cover plates	No
Compatible with	
Bottom pivots	System 3 70 mm Class G
Ceiling plates	Ceiling plate Class G

Installation in the head jamb



Top pivot Reversed

240 × 32 × 45 mm

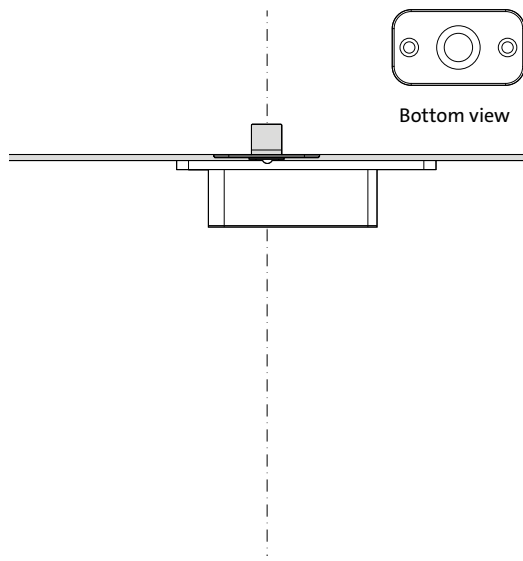
Placement	Middle placement (for System 3)
Pin diameter	Ø15 mm
Pivot point	Middle placement (for System 3)
Adjustment	From the side of the door: 5 mm to the left and 5 mm to the right
Cable grommet	Yes, Ø7.5 mm cable entry
Cover plates	Stainless steel Black White
Compatible with	
Bottom pivots	System 3 70 mm Class G
Ceiling plates	Receiver

Find out more about [ceiling plates](#).

Ceiling plates and Receiver

Our ceiling plates and Receiver pair with the top pivots. The ceiling plates can be combined with all our top pivots, except for the Receiver. The top pivot Reversed pairs best with the Receiver to mount in the door.

Ceiling plates



Ceiling plate Class G

70 × 40 × 23 mm

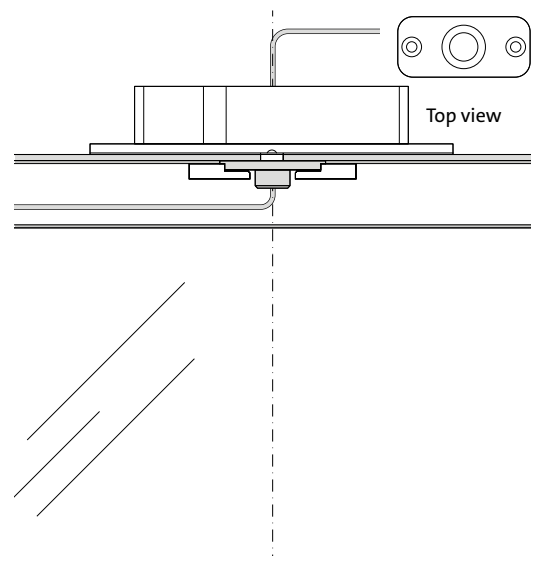
Colours Stainless steel
 Black

Pin diameter Ø15 mm

Compatible with

Top pivots Top pivot 70 mm Class G

Receiver



Receiver

70 × 32 × 18 mm

Colours Stainless steel

Pin diameter Ø15 mm

Compatible with

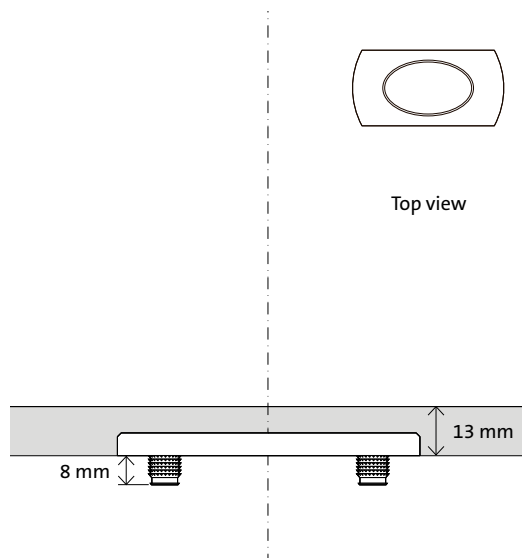
Top pivots Top pivot Reversed

Accessories Adapters

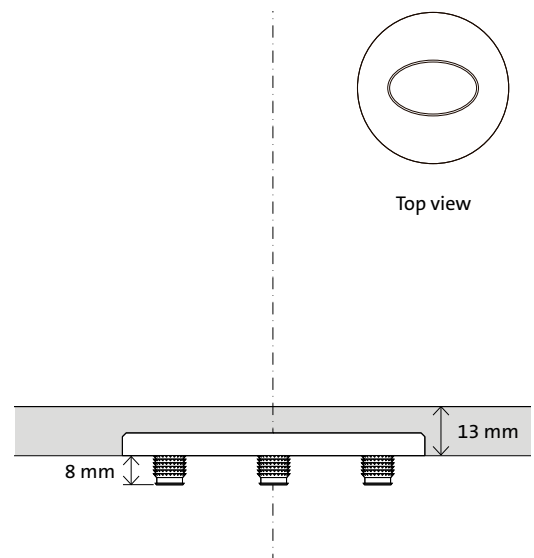
Floor plates

Our floor plates support the door at the bottom. They are surface mounted with only short pins anchoring into the floor. Their compact design makes installation a lot easier, and they combine perfectly with pre-installed underfloor heating.

Installation on the floor



Top view



Top view

Floor plate squared

80 × 40 × 6 mm

Mounting pins	Two 8 mm pins
Undercut	13 mm
Colours	Stainless steel

Floor plate round

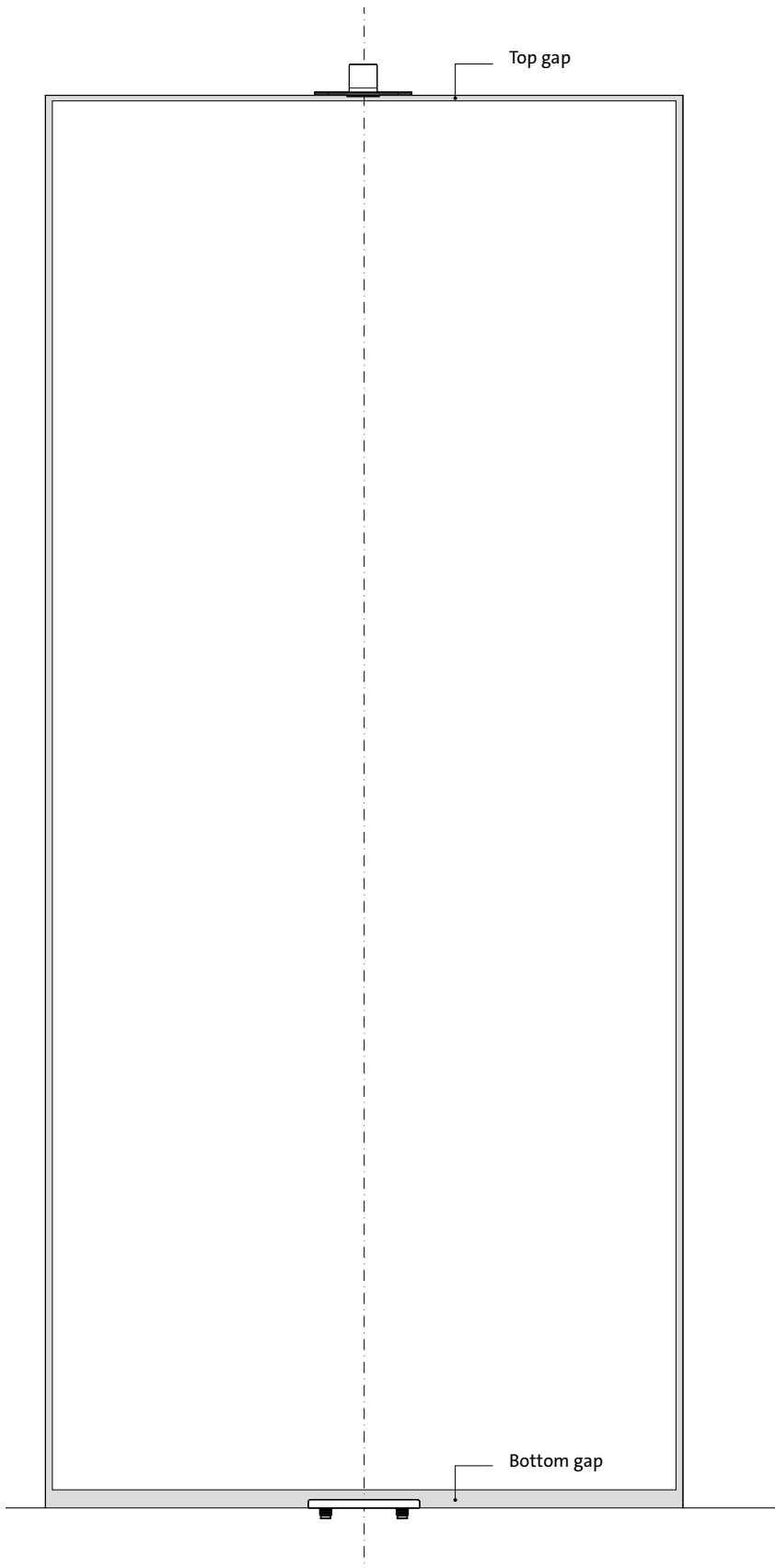
Ø80 × 6 mm

Mounting pins	Three 8 mm pins
Undercut	13 mm
Colours	Stainless steel

Technical checklist

To make sure you have every technical specific you need, we have compiled a smart checklist.

Top gap



Top gap

The distance between ceiling and top of the door should be 4-10 mm*.

* In all situations, beware of sagging.

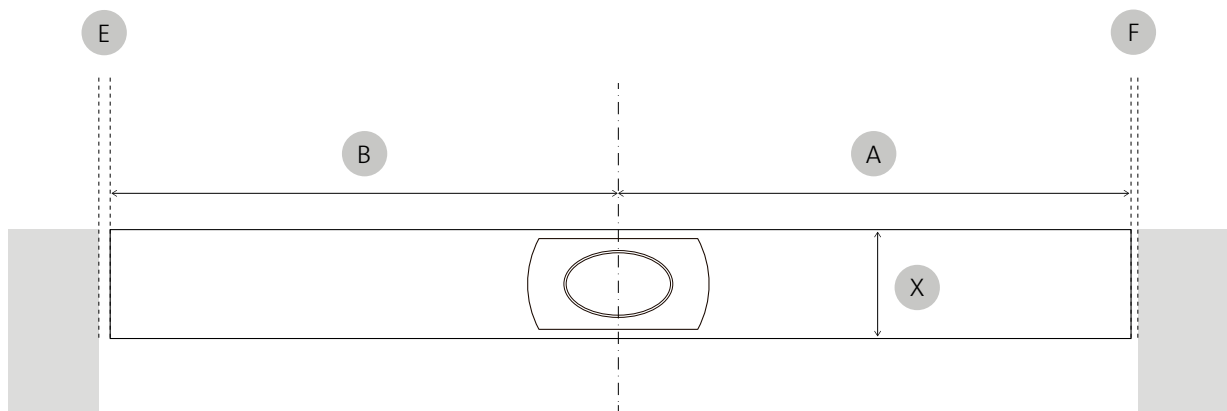
Bottom gap

The size of the gap between the bottom of the door and the floor for the System 3 floor plates is 13 mm.

Floor plate squared	13 mm
---------------------	-------

Floor plate round	13 mm
-------------------	-------

Side gaps



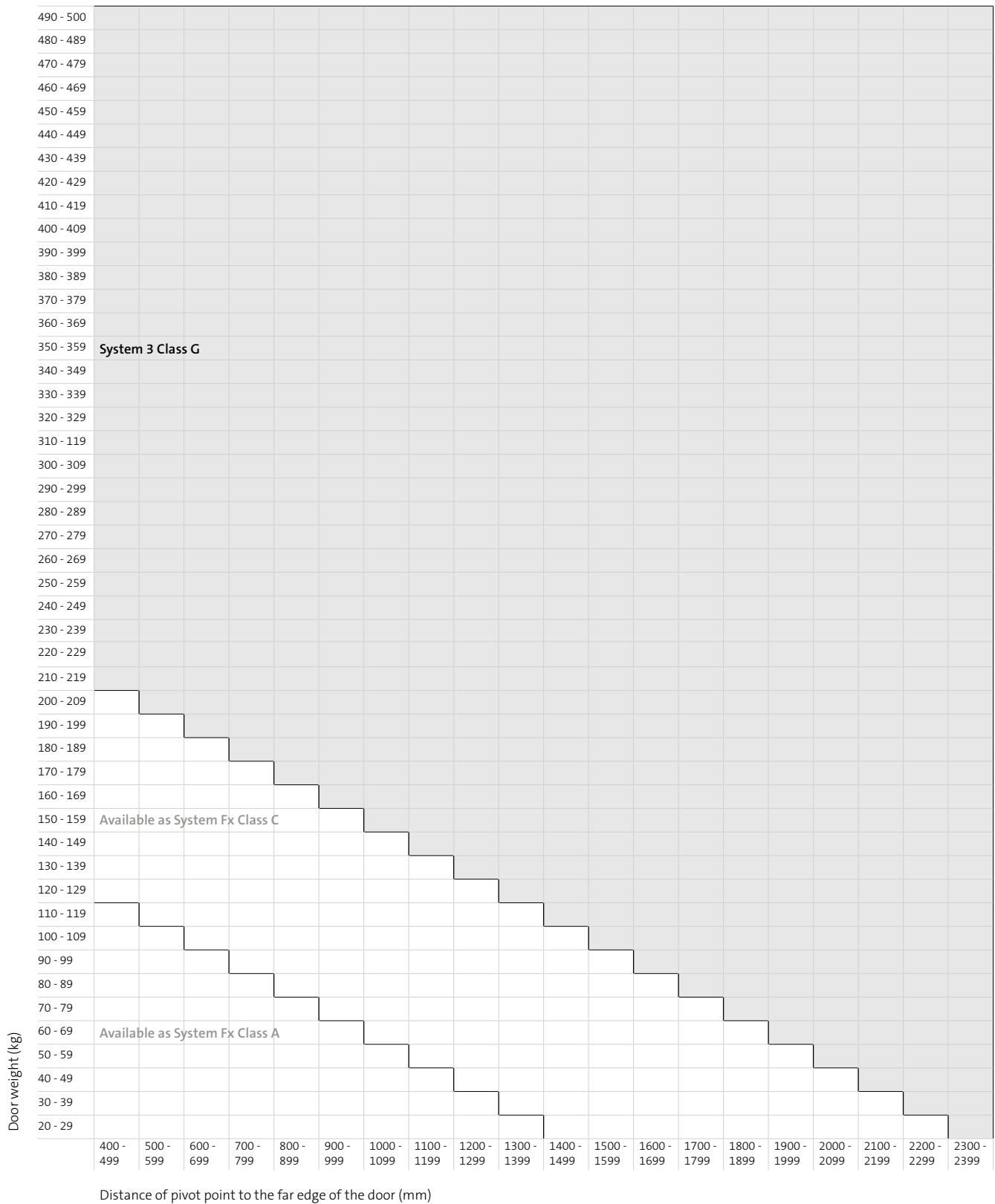
- X Door thickness
- A B Distance of pivot point to either edge of the door
- E Minimum gap left
- F Minimum gap right

The minimum gap at the side of the door depends on the thickness and the width of the door in relation to the position of the pivot point.

The calculation is made based on the radius of the door when turning. The smaller the radius (the pivoting side) and the thicker the door, the bigger the required gap between door and wall or frame.

Calculate the required gap dimensions with our Gap Calculator: www.fritsjurgens.com/gap-calculator

System 3 weight classes table



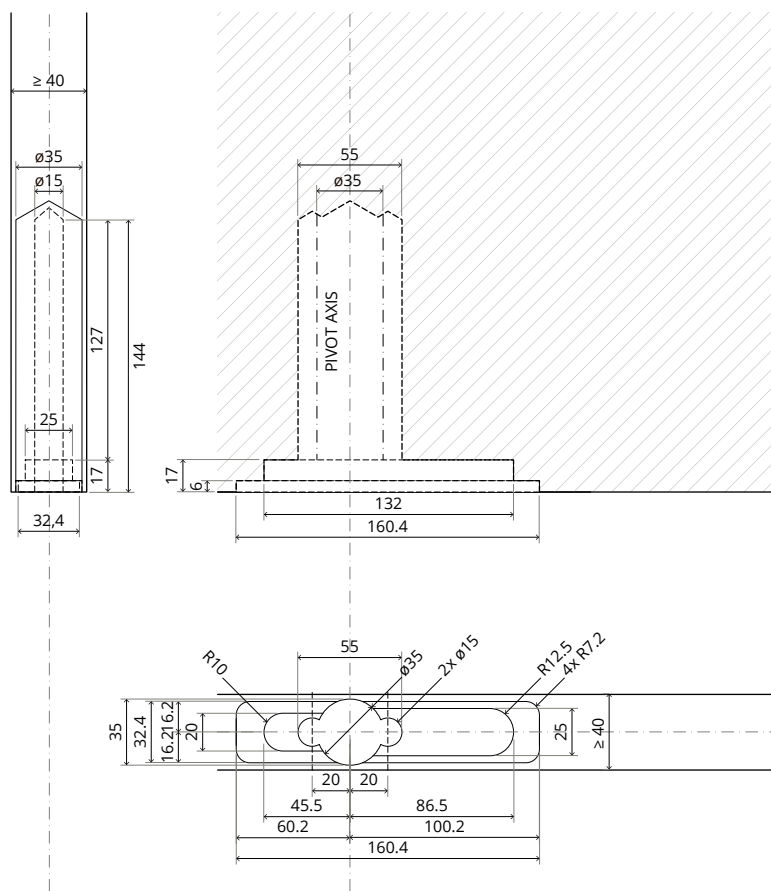
Milling and components

We tried to keep our milling procedure as simple as our designs. By following the step-by-step instructions, preparing a door to fit our components should be easy as one two three. Keep in mind that the space for milling is always larger than the system itself.

System 3 70 mm Class G

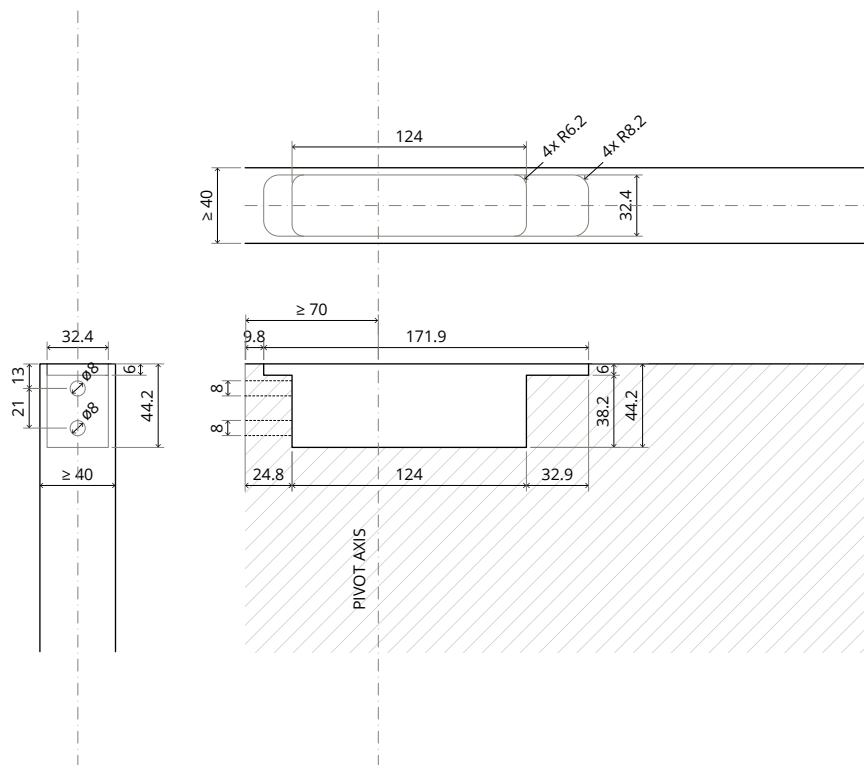
Milling - preparing the door

Pivot point = minimally 70 mm

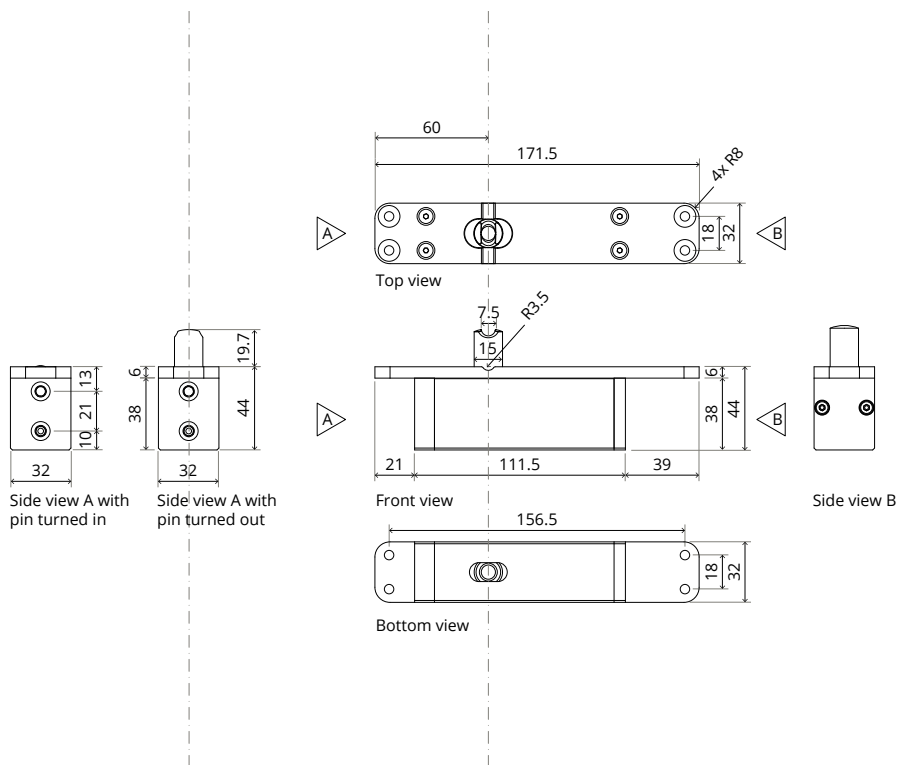


Top pivot 70 mm Class G

Milling - preparing the door

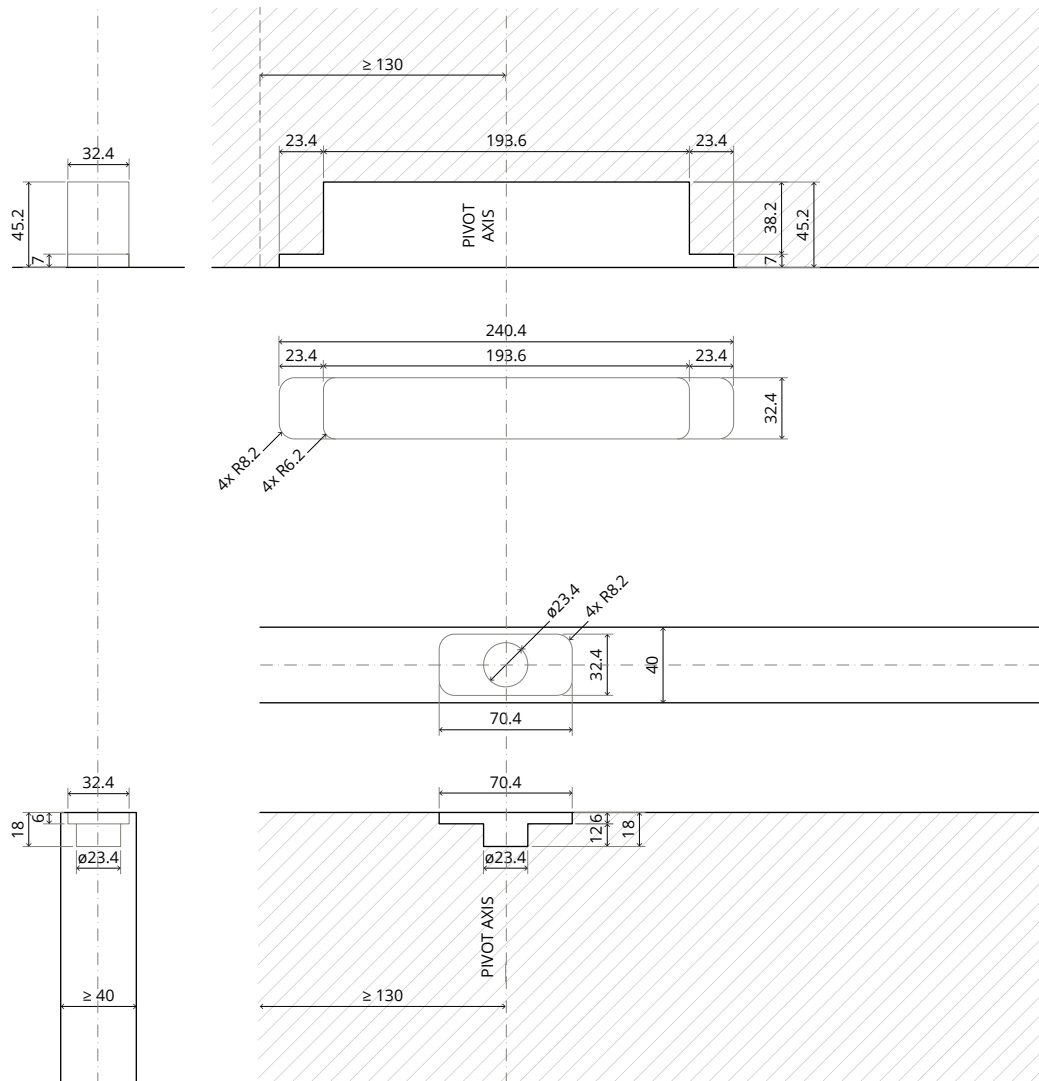


Components

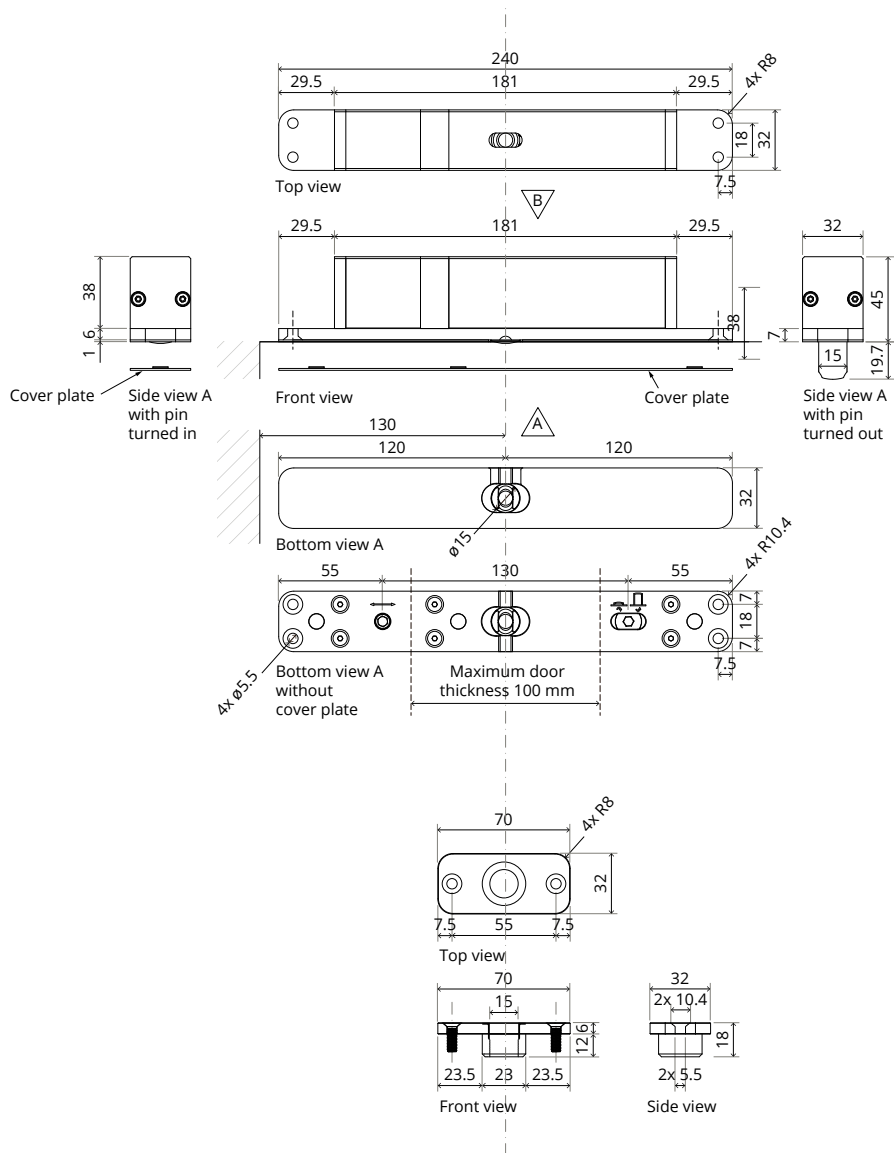


Top pivot Reversed

Milling - preparing the door



Components



FritsJurgens International

A. Einsteinlaan 1
9615 TE Kolham
The Netherlands
+31 598 343 410
info@fritsjurgens.com

FritsJurgens Dubai Branch

DLC-OP-A2-4-0029
Dubai South
Dubai
United Arab Emirates
+971 4 820 8106
+971 58 137 2611
dubai@fritsjurgens.com

fritsjurgens.com



Copyright © FritsJurgens®
BO.tech.S3.EN - 11/2024